

XG Polyclonal Antibody

Description

Product type	Primary Antibody
Code	BT-AP15570
Host	Rabbit
Isotype	IgG
Size	20ul, 50ul, 100ul
Immunogen	Synthesized peptide derived from part region of human protein
Mol wt	N/A
Species reactivity	Human, Rat, Mouse
Clonality	Polyclonal
Recommended application	WB, ELISA
Concentration	1 mg/ml
Full name	Glycoprotein Xg
Synonyms	Glycoprotein Xg ;Protein PBDX

This product is for research use only, not for use in human, therapeutic or diagnostic procedure.

Background

This gene encodes the XG blood group antigen, and is located at the pseudoautosomal boundary on the short (p) arm of chromosome X. The three 5' exons reside in the pseudoautosomal region and the remaining exons within the X-specific end. A truncated copy of this gene is found on the Y chromosome at the pseudoautosomal boundary. It is transcribed, but not expected to make a Y-chromosome specific gene product. Alternatively spliced transcript variants encoding different isoforms have been found for this gene.

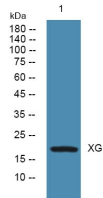
Recommended Dilution

WB: 1: 500 - 1: 2000

ELISA: 1: 5000 - 1: 20000

Not yet tested in other applications.

Images



Western blot analysis of lysates from KB cells, primary antibody was diluted at 1:1000, 4°C overnight

Storage

-20°C for 1 year