

FCRL1 Polyclonal Antibody

Description

Product type	Primary Antibody
Code	BT-AP15572
Host	Rabbit
Isotype	IgG
Size	20ul, 50ul, 100ul
Immunogen	Synthesized peptide derived from part region of human protein
Mol wt	N/A
Species reactivity	Human, Mouse
Clonality	Polyclonal
Recommended application	WB, ELISA
Concentration	1 mg/ml
Full name	Fc receptor-like protein 1
Synonyms	Fc receptor-like protein 1 ;FcR-like protein 1;FcRL1;Fc receptor homolog 1;FcRH1;IFGP family protein 1;hIFGP1;Immune receptor translocation-associated protein 5;CD antigen CD307a

This product is for research use only, not for use in human, therapeutic or diagnostic procedure.

Background

This gene encodes a member of the immunoglobulin receptor superfamily and is one of several Fc receptor-like glycoproteins clustered on the long arm of chromosome 1. The encoded protein contains three extracellular C2-like immunoglobulin domains, a transmembrane domain and a cytoplasmic domain with two immunoreceptor-tyrosine activation motifs. This protein may play a role in the regulation of cancer cell growth. Alternative splicing results in multiple transcript variants.

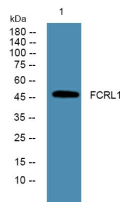
Recommended Dilution

WB: 1: 500 - 1: 2000

ELISA: 1: 5000 - 1: 20000

Not yet tested in other applications.

Images



Western blot analysis of lysates from Jarkat cells, primary antibody was diluted at 1:1000, 4°C overnight

Storage

-20°C for 1 year