

FGFP3 Polyclonal Antibody

Description

Product type	Primary Antibody
Code	BT-AP15579
Host	Rabbit
Isotype	IgG
Size	20ul, 50ul, 100ul
Immunogen	Synthesized peptide derived from human protein . at AA range: 110-190
Mol wt	N/A
Species reactivity	Human, Rat, Mouse
Clonality	Polyclonal
Recommended application	WB, ELISA
Concentration	1 mg/ml
Full name	Fibroblast growth factor-binding protein 3
Synonyms	Fibroblast growth factor-binding protein 3 ;FGF-BP3;FGF-binding protein 3;FGFBP-3

This product is for research use only, not for use in human, therapeutic or diagnostic procedure.

Background

Belongs to the fibroblast growth factor-binding protein family.,subunit:Interacts with FGF1.,

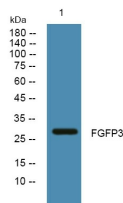
Recommended Dilution

WB: 1: 500 - 1: 2000

ELISA: 1: 5000 - 1: 20000

Not yet tested in other applications.

Images



Western blot analysis of lysates from K562 cells, primary antibody was diluted at 1:1000, 4°C overnight

Storage

-20°C for 1 year

501 Changsheng S Rd, Nanhu Dist, Jiaxing, Zhejiang, China

Tel: 86 21 31007137 | E-mail: save@bt-laboratory.com | www.bt-laboratory.com