

YIPF3 Polyclonal Antibody

Description

Product type	Primary Antibody
Code	BT-AP15590
Host	Rabbit
Isotype	IgG
Size	20ul, 50ul, 100ul
Immunogen	Synthesized peptide derived from human protein . at AA range: N-terminal
Mol wt	N/A
Species reactivity	Human, Mouse, Rat
Clonality	Polyclonal
Recommended application	WB, ELISA
Concentration	1 mg/ml
Full name	Protein YIPF3
Synonyms	Protein YIPF3 ;Killer lineage protein 1;Natural killer cell-specific antigen KLIP1;YIP1 family member 3 [Cleaved into: Protein YIPF3, 36 kDa form III]

This product is for research use only, not for use in human, therapeutic or diagnostic procedure.

Background

developmental stage:Expressed in fetal liver (at protein level). Expressed in embryonic hematopoiesis sites.,May play a role in hematopoiesis.,PTM:Not glycosylated.,Belongs to the YIP1 family.,subcellular location:Localization to the cytoplasm or to the cell membrane is developmentally and ontogenetically regulated.,tissue specificity:Expressed by nucleated hematopoietic cells (at protein level).,

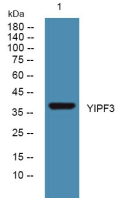
Recommended Dilution

WB: 1: 500 - 1: 2000

ELISA: 1: 5000 - 1: 20000

Not yet tested in other applications.

Images



Western blot analysis of lysates from A431 cells, primary antibody was diluted at 1:1000, 4°C overnight

Storage

-20°C for 1 year