

FKB1B Polyclonal Antibody

Description

Product type	Primary Antibody
Code	BT-AP15601
Host	Rabbit
Isotype	IgG
Size	20ul, 50ul, 100ul
Immunogen	Synthesized peptide derived from part region of human protein
Mol wt	N/A
Species reactivity	Human, Rat, Mouse
Clonality	Polyclonal
Recommended application	WB, ELISA
Concentration	1 mg/ml
Full name	Peptidyl-prolyl cis-trans isomerase FKBP1B
Synonyms	Peptidyl-prolyl cis-trans isomerase FKBP1B ;PPIase FKBP1B;EC 5.2.1.8;12.6 kDa FK506-binding protein;12.6 kDa FKBP;FKBP-12.6;FK506-binding protein 1B;FKBP-1B;Immunophilin FKBP12.6;Rotam

This product is for research use only, not for use in human, therapeutic or diagnostic procedure.

Background

The protein encoded by this gene is a member of the immunophilin protein family, which play a role in immunoregulation and basic cellular processes involving protein folding and trafficking. This encoded protein is a cis-trans prolyl isomerase that binds the immunosuppressants FK506 and rapamycin. It is highly similar to the FK506-binding protein 1A. Its physiological role is thought to be in excitation-contraction coupling in cardiac muscle. There are two alternatively spliced transcript variants of this gene encoding different isoforms.

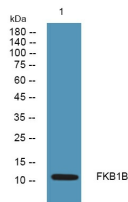
Recommended Dilution

WB: 1: 500 - 1: 2000

ELISA: 1: 5000 - 1: 20000

Not yet tested in other applications.

Images



Western blot analysis of lysates from A431 cells, primary antibody was diluted at 1:1000, 4°C overnight

Storage

-20°C for 1 year