

FKBP2 Polyclonal Antibody

Description

Product type	Primary Antibody
Code	BT-AP15602
Host	Rabbit
Isotype	IgG
Size	20ul, 50ul, 100ul
Immunogen	Synthesized peptide derived from human protein . at AA range: 80-160
Mol wt	N/A
Species reactivity	Human, Mouse
Clonality	Polyclonal
Recommended application	WB, ELISA
Concentration	1 mg/ml
Full name	Peptidyl-prolyl cis-trans isomerase FKBP2
Synonyms	Peptidyl-prolyl cis-trans isomerase FKBP2 ;PPIase FKBP2;EC 5.2.1.8;13 kDa FK506-binding protein;13 kDa FKBP;FKBP-13;FK506-binding protein 2;FKBP-2;Immunophilin FKBP13;Rotamase

This product is for research use only, not for use in human, therapeutic or diagnostic procedure.

Background

The protein encoded by this gene is a member of the immunophilin protein family, which play a role in immunoregulation and basic cellular processes involving protein folding and trafficking. This encoded protein is a cis-trans prolyl isomerase that binds the immunosuppressants FK506 and rapamycin. It is thought to function as an ER chaperone and may also act as a component of membrane cytoskeletal scaffolds. Multiple alternatively spliced variants, encoding the same protein, have been identified.

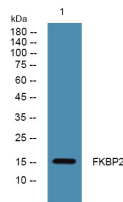
Recommended Dilution

WB: 1: 500 - 1: 2000

ELISA: 1: 5000 - 1: 20000

Not yet tested in other applications.

Images



Western blot analysis of lysates from DU145 cells, primary antibody was diluted at 1:1000, 4°C overnight

Storage

-20°C for 1 year