

FLAG-tag Polyclonal Antibody

Description

Product type	Primary Antibody
Code	BT-AP15612
Host	Rabbit
Isotype	IgG
Size	20ul, 50uL, 100ul
Immunogen	DDDDK synthetic peptide conjugated to KLH.
Mol wt	N/A
Species reactivity	Species independent
Clonality	Polyclonal
Recommended application	WB, ELISA
Concentration	1 mg/ml
Full name	Flag-Tag DDDDK TAG, DDDDK-TAG
Synonyms	Flag-Tag DDDDK TAG, DDDDK-TAG; DDDDK epitope tag; DDDDK epitope tag; DYKDDDDK epitope tag

This product is for research use only, not for use in human, therapeutic or diagnostic procedure.

Background

The DYKDDDDK (FLAG) peptide has been used extensively as a general tag in expression vectors. This peptide can be expressed and detected with the protein of interest as an amino-terminal or carboxy-terminal fusion. N-terminal FLAG vectors provide an Ek cleavage site for removal of the fusion tag. The FLAG peptide is likely to be located on the surface of a fusion protein because of its hydrophilic nature. As a result, the FLAG peptide is more likely to be accessible to antibodies. A FLAG-tag can be used in many different assays that require recognition by an antibody, such as western blotting, immunocytochemistry, immunoprecipitation, flow cytometry, protein purification, and in the study of protein-protein interactions, cell ultrastructure, and protein localization and so on.

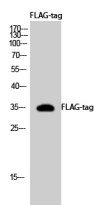
Recommended Dilution

WB: 1: 1000 - 1: 3000

ELISA: 1: 20000

Not yet tested in other applications.

Images



Western Blot analysis using FLAG-tag Polyclonal Antibody against HEK293 cells transfected with vector overexpressing FLAG tag (1) and untransfected (2). Secondary antibody was diluted at 1:20000

Storage

-20°C for 1 year