

ZDH18 Polyclonal Antibody

Description

Product type	Primary Antibody
Code	BT-AP15623
Host	Rabbit
Isotype	IgG
Size	20ul, 50ul, 100ul
Immunogen	Synthesized peptide derived from human protein . at AA range: 20-100
Mol wt	N/A
Species reactivity	Human, Mouse, Rat
Clonality	Polyclonal
Recommended application	WB, ELISA
Concentration	1 mg/ml
Full name	Palmitoyltransferase ZDHHC18
Synonyms	Palmitoyltransferase ZDHHC18 ;EC 2.3.1.-.;Zinc finger DHHC domain-containing protein 18;DHHC-18

This product is for research use only, not for use in human, therapeutic or diagnostic procedure.

Background

Catalytic activity:Palmitoyl-CoA + protein-cysteine = S-palmitoyl protein + CoA.,The DHHC domain is required for palmitoyltransferase activity.,Has palmitoyltransferase activity towards HRAS and LCK.,Belongs to the DHHC palmitoyltransferase family. ERF2/ZDHHC9 subfamily.,Contains 1 DHHC-type zinc finger.,

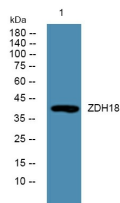
Recommended Dilution

WB: 1: 500 - 1: 2000

ELISA: 1: 5000 - 1: 20000

Not yet tested in other applications.

Images



Western blot analysis of lysates from Jarkat cells, primary antibody was diluted at 1:1000, 4°C overnight

Storage

-20°C for 1 year