

## ZFP42 Polyclonal Antibody

### Description

<b>Product type</b>	Primary Antibody
<b>Code</b>	BT-AP15629
<b>Host</b>	Rabbit
<b>Isotype</b>	IgG
<b>Size</b>	20ul, 50ul, 100ul
<b>Immunogen</b>	Synthesized peptide derived from human protein . at AA range: 70-150
<b>Mol wt</b>	N/A
<b>Species reactivity</b>	Human, Mouse
<b>Clonality</b>	Polyclonal
<b>Recommended application</b>	WB, ELISA
<b>Concentration</b>	1 mg/ml
<b>Full name</b>	Zinc finger protein 42 homolog
<b>Synonyms</b>	Zinc finger protein 42 homolog ;Zfp-42;Reduced expression protein 1;REX-1;hREX-1;Zinc finger protein 754

This product is for research use only, not for use in human, therapeutic or diagnostic procedure.

### Background

Involved in self-renewal property of ES cells (By similarity). May be involved in transcriptional regulation.,induction:Down-regulation upon retinoic acid addition to F9 stem cells.,Belongs to the krueppel C2H2-type zinc-finger protein family.,Contains 4 C2H2-type zinc fingers.,tissue specificity:Expressed in kidney, epidermal keratinocytes, prostate epithelial cells, bronchial and small airway lung epithelial cells (at protein level). Expressed in malignant kidney and several carcinoma cell lines (at protein level). Expressed in embryonic stem cells, kidney, epidermal keratinocytes, prostate epithelial cells, bronchial and small airway lung epithelial cells. Expressed in embryonal carcinomas, seminomas, malignant kidney and several carcinoma cell lines.,

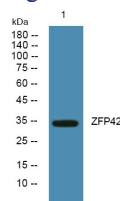
### Recommended Dilution

WB: 1: 500 - 1: 2000

ELISA: 1: 5000 - 1: 20000

Not yet tested in other applications.

### Images



Western blot analysis of lysates from K562 cells, primary antibody was diluted at 1:1000, 4°C overnight

### Storage

-20°C for 1 year