

Flt3-L Polyclonal Antibody

Description

Product type	Primary Antibody
Code	BT-AP15639
Host	Rabbit
Isotype	IgG
Size	20ul, 50ul, 100ul
Immunogen	The antiserum was produced against synthesized peptide derived from the C-terminal region of human FLT3LG. AA range:171-220
Mol wt	26416
Species reactivity	Human, Rat, Mouse
Clonality	Polyclonal
Recommended application	WB, ELISA
Concentration	1 mg/ml
Full name	Fms-related tyrosine kinase 3 ligand
Synonyms	Fms-related tyrosine kinase 3 ligand; FLT3LG; Fms-related tyrosine kinase 3 ligand; Flt3 ligand; Flt3L; SL cytokine

This product is for research use only, not for use in human, therapeutic or diagnostic procedure.

Background

Dendritic cells (DCs) provide the key link between innate and adaptive immunity by recognizing pathogens and priming pathogen-specific immune responses. FLT3LG controls the development of DCs and is particularly important for plasmacytoid DCs and CD8 (see MIM 186910)-positive classical DCs and their CD103 (ITGAE; MIM 604682)-positive tissue counterparts (summary by Sathaliyawala et al., 2010

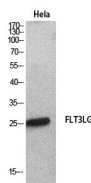
Recommended Dilution

WB: 1: 500 - 1: 2000

ELISA: 1: 20000

Not yet tested in other applications.

Images



Western Blot analysis of HeLa cells using Flt3-L Polyclonal Antibody. Secondary antibody was diluted at 1:20000

Storage

-20°C for 1 year