

Fos B(Phospho Ser27) Polyclonal Antibody

Description

Product type	Primary Antibody
Code	BT-AP15644
Host	Rabbit
Isotype	IgG
Size	20ul, 50ul, 100ul
Immunogen	The antiserum was produced against synthesized peptide derived from human FosB around the phosphorylation site of Ser27. AA range:12-61
Mol wt	35928
Species reactivity	Human, Mouse
Clonality	Polyclonal
Recommended application	WB, IHC-p, IF, ICC, ELISA
Concentration	1 mg/ml
Full name	Protein fosB
Synonyms	Protein fosB; FOSB; G0S3; Protein fosB; G0/G1 switch regulatory protein 3

This product is for research use only, not for use in human, therapeutic or diagnostic procedure.

Background

The Fos gene family consists of 4 members: FOS, FOSB, FOSL1, and FOSL2. These genes encode leucine zipper proteins that can dimerize with proteins of the JUN family, thereby forming the transcription factor complex AP-1. As such, the FOS proteins have been implicated as regulators of cell proliferation, differentiation, and transformation. Alternatively spliced transcript variants encoding different isoforms have been found for this gene.

Recommended Dilution

WB: 1: 500 - 1: 2000

IHC-p: 1: 100 - 1: 300

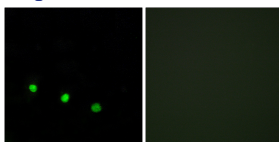
IF: 1: 200 - 1: 1000

ICC: 1: 200 - 1: 1000

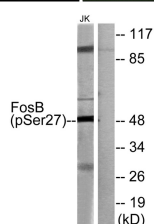
ELISA: 1: 5000

Not yet tested in other applications.

Images



Immunofluorescence analysis of HUVEC cells treated with EGF 200nM 5', using FosB (Phospho-Ser27) Antibody. The picture on the right is blocked with the phospho peptide.



Western blot analysis of FosB (Phospho-Ser27) Antibody. The lane on the right is blocked with the FosB (Phospho-Ser27) peptide.

Storage

-20°C for 1 year

501 Changsheng S Rd, Nanhu Dist, Jiaxing, Zhejiang, China

Tel: 86 21 31007137 | E-mail: save@bt-laboratory.com | www.bt-laboratory.com