

FoxL2(Phospho Ser263) Polyclonal Antibody

Description

Product type	Primary Antibody
Code	BT-AP15646
Host	Rabbit
Isotype	IgG
Size	20ul, 50ul, 100ul
Immunogen	The antiserum was produced against synthesized peptide derived from human FOXL2 around the phosphorylation site of Ser263. AA range:229-278
Mol wt	38772
Species reactivity	Human, Mouse
Clonality	Polyclonal
Recommended application	WB, ELISA
Concentration	1 mg/ml
Full name	Forkhead box protein L2
Synonyms	Forkhead box protein L2; FOXL2; Forkhead box protein L2

This product is for research use only, not for use in human, therapeutic or diagnostic procedure.

Background

This gene encodes a forkhead transcription factor. The protein contains a fork-head DNA-binding domain and may play a role in ovarian development and function. Expansion of a polyalanine repeat region and other mutations in this gene are a cause of blepharophimosis syndrome and premature ovarian failure 3.

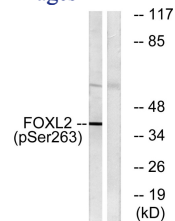
Recommended Dilution

WB: 1: 500 - 1: 2000

ELISA: 1: 20000

Not yet tested in other applications.

Images



Western blot analysis of lysates from K562 cells treated with Na₃VO₄ 0.3mM 40', using FOXL2 (Phospho-Ser263) Antibody. The lane on the right is blocked with the phospho peptide.

Storage

-20°C for 1 year