

FoxO1(Phospho Ser256) Polyclonal Antibody

Description

Product type	Primary Antibody
Code	BT-AP15648
Host	Rabbit
Isotype	IgG
Size	20ul, 50ul, 100ul
Immunogen	The antiserum was produced against synthesized peptide derived from human FKHR around the phosphorylation site of Ser256. AA range:223-272
Mol wt	69662
Species reactivity	Human, Mouse, Rat, Drosophila
Clonality	Polyclonal
Recommended application	WB, IHC-p, IF, ICC, ELISA
Concentration	1 mg/ml
Full name	Forkhead box protein O1
Synonyms	Forkhead box protein O1; FOXO1; FKHR; FOXO1A; Forkhead box protein O1; Forkhead box protein O1A; Forkhead in rhabdomyosarcoma

This product is for research use only, not for use in human, therapeutic or diagnostic procedure.

Background

This gene belongs to the forkhead family of transcription factors which are characterized by a distinct forkhead domain. The specific function of this gene has not yet been determined; however, it may play a role in myogenic growth and differentiation. Translocation of this gene with PAX3 has been associated with alveolar rhabdomyosarcoma.

Recommended Dilution

WB: 1: 500 - 1: 2000

IHC-p: 1: 100 - 1: 300

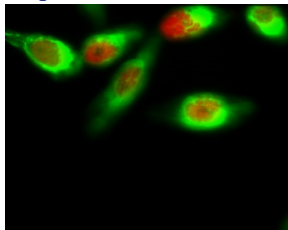
IF: 1: 200 - 1: 1000

ICC: 1: 200 - 1: 1000

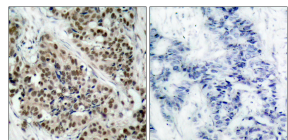
ELISA: 1: 20000

Not yet tested in other applications.

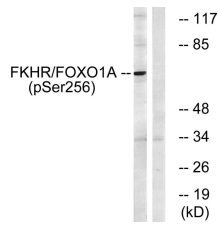
Images



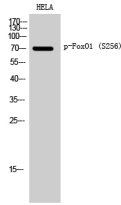
Immunofluorescence analysis of HeLa cell. FoxO1 (phospho Ser256) Polyclonal Antibody (Red) was diluted at 1:200(4°C overnight). Active Caspase-3 Monoclonal Antibody(5E1)(Green) was diluted at 1:200(4°C overnight).



Immunohistochemistry analysis of paraffin-embedded human breast carcinoma, using FKHR (Phospho-Ser256) Antibody. The picture on the right is blocked with the phospho peptide.



Western Blot analysis of HELA cells using Phospho-FoxO1 (S256) Polyclonal Antibody diluted at 1:1000



Western blot analysis of lysates from HeLa cells treated with EGF+Serum, using FKHR (Phospho-Ser256) Antibody. The lane on the right is blocked with the phospho peptide.

Storage

-20°C for 1 year

501 Changsheng S Rd, Nanhu Dist, Jiaxing, Zhejiang, China

Tel: 86 21 31007137 | E-mail: save@bt-laboratory.com | www.bt-laboratory.com