

ZN660 Polyclonal Antibody

Description

Product type	Primary Antibody
Code	BT-AP15662
Host	Rabbit
Isotype	IgG
Size	20ul, 50ul, 100ul
Immunogen	Synthesized peptide derived from part region of human protein
Mol wt	N/A
Species reactivity	Human, Rat, Mouse
Clonality	Polyclonal
Recommended application	WB, ELISA
Concentration	1 mg/ml
Full name	Zinc finger protein 660
Synonyms	Zinc finger protein 660

This product is for research use only, not for use in human, therapeutic or diagnostic procedure.

Background

May be involved in transcriptional regulation.,Belongs to the krueppel C2H2-type zinc-finger protein family.,Contains 10 C2H2-type zinc fingers.,

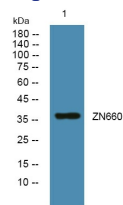
Recommended Dilution

WB: 1: 500 - 1: 2000

ELISA: 1: 5000 - 1: 20000

Not yet tested in other applications.

Images



Western blot analysis of lysates from SH-SY5Y cells, primary antibody was diluted at 1:1000, 4°C overnight

Storage

-20°C for 1 year

501 Changsheng S Rd, Nanhu Dist, Jiaxing, Zhejiang, China

Tel: 86 21 31007137 | E-mail: save@bt-laboratory.com | www.bt-laboratory.com