

## FSH beta Polyclonal Antibody

### Description

|                         |  |
|-------------------------|--|
| Product type            | Primary Antibody   |
| Code                    | BT-AP15678   |
| Host                    | Rabbit   |
| Isotype                 | IgG  |
| Size                    | 20ul, 50ul, 100ul  |
| Immunogen               | Synthetic peptide from human protein at AA range: 10-50  |
| Mol wt                  | N/A  |
| Species reactivity      | Human, Mouse, Rat  |
| Clonality               | Polyclonal   |
| Recommended application | IHC-p, IF, ELISA   |
| Concentration           | 1 mg/ml  |
| Full name               | Follitropin subunit beta   |
| Synonyms                | Follitropin subunit beta ;Follicle-stimulating hormone beta subunit;FSH-B;FSH-beta;Follitropin beta chain;<br>Follitropin subunit beta; Follicle-stimulating hormone beta subunit; FSH-B; FSH-beta; Follitropin beta chain |

This product is for research use only, not for use in human, therapeutic or diagnostic procedure.

### Background

The pituitary glycoprotein hormone family includes follicle-stimulating hormone, luteinizing hormone, chorionic gonadotropin, and thyroid-stimulating hormone. All of these glycoproteins consist of an identical alpha subunit and a hormone-specific beta subunit. This gene encodes the beta subunit of follicle-stimulating hormone. In conjunction with luteinizing hormone, follicle-stimulating hormone induces egg and sperm production. Alternative splicing results in two transcript variants encoding the same protein.

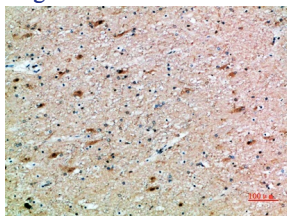
### Recommended Dilution

IHC-p: 1: 50 - 1: 200

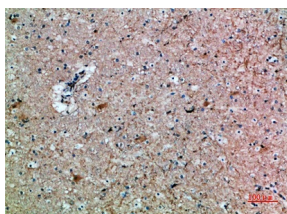
ELISA: 1: 10000 - 1: 20000

Not yet tested in other applications.

### Images



Immunohistochemical analysis of paraffin-embedded human-brain, antibody was diluted at 1:200



Immunohistochemical analysis of paraffin-embedded human-brain, antibody was diluted at 1:200

## Storage

-20°C for 1 year

501 Changsheng S Rd, Nanhu Dist, Jiaxing, Zhejiang, China

Tel: 86 21 31007137 | E-mail: [save@bt-laboratory.com](mailto:save@bt-laboratory.com) | [www.bt-laboratory.com](http://www.bt-laboratory.com)