

Fyn(Phospho Tyr530) Polyclonal Antibody

Description

Product type	Primary Antibody
Code	BT-AP15683
Host	Rabbit
Isotype	IgG
Size	20ul, 50ul, 100ul
Immunogen	The antiserum was produced against synthesized peptide derived from human Fyn around the phosphorylation site of Tyr530. AA range:488-537
Mol wt	60762
Species reactivity	Human, Mouse, Rat
Clonality	Polyclonal
Recommended application	WB, IHC-p, IF, ELISA
Concentration	1 mg/ml
Full name	Tyrosine-protein kinase Fyn
Synonyms	Tyrosine-protein kinase Fyn; FYN; Tyrosine-protein kinase Fyn; Proto-oncogene Syn; Proto-oncogene c-Fyn; Src-like kinase; SLK; p59-Fyn

This product is for research use only, not for use in human, therapeutic or diagnostic procedure.

Background

This gene is a member of the protein-tyrosine kinase oncogene family. It encodes a membrane-associated tyrosine kinase that has been implicated in the control of cell growth. The protein associates with the p85 subunit of phosphatidylinositol 3-kinase and interacts with the fyn-binding protein. Alternatively spliced transcript variants encoding distinct isoforms exist.

Recommended Dilution

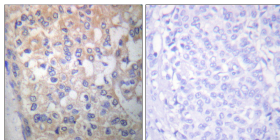
WB: 1: 500 - 1: 2000

IHC-p: 1: 100 - 1: 300

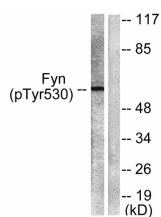
ELISA: 1: 5000

Not yet tested in other applications.

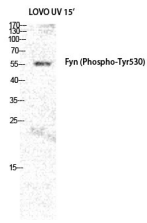
Images



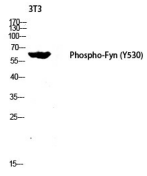
Immunohistochemistry analysis of paraffin-embedded human breast carcinoma, using Fyn (Phospho-Tyr530) Antibody. The picture on the right is blocked with the phospho peptide.



Western Blot analysis of LOVO+UV cells using Phospho-Fyn (Y530) Polyclonal Antibody diluted at 1:2000



Western blot analysis of 3T3 lysis using Phospho-Fyn (Y530) antibody. Antibody was diluted at 1:2000



Western blot analysis of lysates from 293 cells treated with H₂O₂ 100uM 15', using Fyn (Phospho-Tyr530) Antibody. The lane on the right is blocked with the phospho peptide.

Storage

-20°C for 1 year

501 Changsheng S Rd, Nanhu Dist, Jiaxing, Zhejiang, China

Tel: 86 21 31007137 | E-mail: save@bt-laboratory.com | www.bt-laboratory.com