

## Gab 1(Phospho Tyr659) Polyclonal Antibody

### Description

|                                |   |
|--------------------------------|---|
| <b>Product type</b>            | Primary Antibody  |
| <b>Code</b>                    | BT-AP15684  |
| <b>Host</b>                    | Rabbit  |
| <b>Isotype</b>                 | IgG   |
| <b>Size</b>                    | 20ul, 50ul, 100ul   |
| <b>Immunogen</b>               | The antiserum was produced against synthesized peptide derived from human GAB1 around the phosphorylation site of Tyr659. AA range:644-674                        |
| <b>Mol wt</b>                  | 76616   |
| <b>Species reactivity</b>      | Human, Mouse, Rat   |
| <b>Clonality</b>               | Polyclonal  |
| <b>Recommended application</b> | WB, IHC-p, IF, ICC, ELISA   |
| <b>Concentration</b>           | 1 mg/ml   |
| <b>Full name</b>               | GRB2-associated-binding protein 1   |
| <b>Synonyms</b>                | GRB2-associated-binding protein 1; GAB1; GRB2-associated-binding protein 1; GRB2-associated binder 1; Growth factor receptor bound protein 2-associated protein 1 |

**This product is for research use only, not for use in human, therapeutic or diagnostic procedure.**

### Background

The protein encoded by this gene is a member of the IRS1-like multisubstrate docking protein family. It is an important mediator of branching tubulogenesis and plays a central role in cellular growth response, transformation and apoptosis. Two transcript variants encoding different isoforms have been found for this gene.

### Recommended Dilution

WB: 1: 500 - 1: 2000

IHC-p: 1: 100 - 1: 300

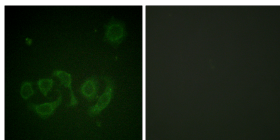
IF: 1: 200 - 1: 1000

ICC: 1: 200 - 1: 1000

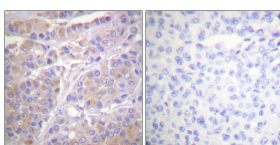
ELISA: 1: 5000

Not yet tested in other applications.

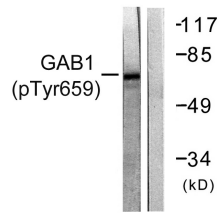
### Images



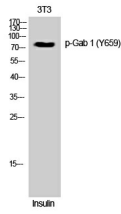
Immunofluorescence analysis of HepG2 cell, using GAB1 (Phospho-Tyr659) Antibody. The lane on the right is blocked with the GAB1 (Phospho-Tyr659) peptide.



Immunohistochemistry analysis of paraffin-embedded human breast cancer, using GAB1 (Phospho-Tyr659) Antibody. The picture on the right is blocked with the GAB1 (Phospho-Tyr659) peptide.



Western Blot analysis of 3T3 cells using Phospho-Gab 1 (Y659) Polyclonal Antibody



Western blot analysis of GAB1 (Phospho-Tyr659) Antibody. The lane on the right is blocked with the GAB1 (Phospho-Tyr659) peptide.

### Storage

-20°C for 1 year

501 Changsheng S Rd, Nanhu Dist, Jiaxing, Zhejiang, China

Tel: 86 21 31007137 | E-mail: [save@bt-laboratory.com](mailto:save@bt-laboratory.com) | [www.bt-laboratory.com](http://www.bt-laboratory.com)