

GABA A Receptor alpha4 Polyclonal Antibody

Description

Product type	Primary Antibody
Code	BT-AP15686
Host	Rabbit
Isotype	IgG
Size	20ul, 50ul, 100ul
Immunogen	Synthetic Peptide of GABA A Receptor α 4
Mol wt	N/A
Species reactivity	Human, Rat, Mouse
Clonality	Polyclonal
Recommended application	WB, IHC-p, IF
Concentration	1 mg/ml
Full name	Gamma-aminobutyric acid receptor subunit alpha-4
Synonyms	Gamma-aminobutyric acid receptor subunit alpha-4 ;GABA;A receptor subunit alpha-4; GABRA4; Gamma-aminobutyric acid receptor subunit alpha-4; GABA;A receptor subunit alpha-4

This product is for research use only, not for use in human, therapeutic or diagnostic procedure.

Background

Gamma-aminobutyric acid (GABA) is the major inhibitory neurotransmitter in the mammalian brain where it acts at GABA-A receptors, which are ligand-gated chloride channels. Chloride conductance of these channels can be modulated by agents such as benzodiazepines that bind to the GABA-A receptor. At least 16 distinct subunits of GABA-A receptors have been identified. This gene encodes subunit alpha-4, which is involved in the etiology of autism and eventually increases autism risk through interaction with another subunit, gamma-aminobutyric acid receptor beta-1 (GABRB1). Alternatively spliced transcript variants encoding different isoforms have been found in this gene.

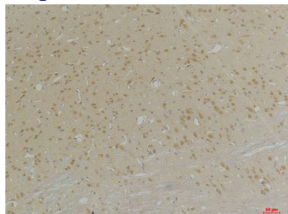
Recommended Dilution

WB: 1: 1000 - 1: 2000

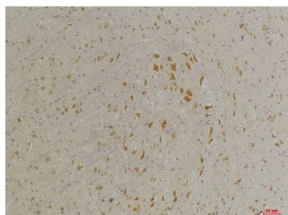
IHC: 1: 100 - 1: 200

Not yet tested in other applications.

Images

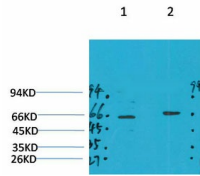


Immunohistochemical analysis of paraffin-embedded Rat Brain Tissue using GABA A Receptor α 4 Rabbit pAb diluted at 1:200.



Immunohistochemical analysis of paraffin-embedded Mouse Brain Tissue using GABA A Receptor α 4 Rabbit pAb diluted at 1:200.

Western blot analysis of 1) Mouse Brain Tissue, 2) Rat Brain Tissue with GABA A Receptor $\alpha 4$
Rabbit pAb diluted at 1:2,000.



Storage

-20°C for 1 year

501 Changsheng S Rd, Nanhu Dist, Jiaxing, Zhejiang, China

Tel: 86 21 31007137 | E-mail: save@bt-laboratory.com | www.bt-laboratory.com