

GABA Transporter 1 Polyclonal Antibody

Description

Product type	Primary Antibody
Code	BT-AP15688
Host	Rabbit
Isotype	IgG
Size	20ul, 50ul, 100ul
Immunogen	Synthetic Peptide of GABA Transporter 1
Mol wt	N/A
Species reactivity	Human, Rat, Mouse
Clonality	Polyclonal
Recommended application	WB, IHC-p, IF
Concentration	1 mg/ml
Full name	Sodium- and chloride-dependent GABA transporter 1
Synonyms	Sodium- and chloride-dependent GABA transporter 1 ;GAT-1;Solute carrier family 6 member 1; SLC6A1; GABATR; GABT1; GAT1; Sodium- and chloride-dependent GABA transporter 1; GAT-1; Solute carrier family 6 member 1

This product is for research use only, not for use in human, therapeutic or diagnostic procedure.

Background

The SLC6A1 gene encodes a gamma-aminobutyric acid (GABA) transporter, which removes GABA from the synaptic cleft (Hirunsatit et al., 2009)

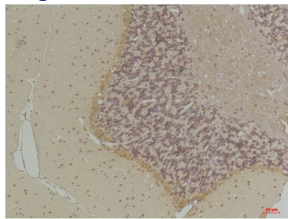
Recommended Dilution

WB: 1: 1000 - 1: 2000

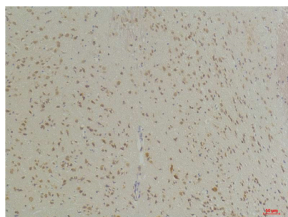
IHC: 1: 100 - 1: 200

Not yet tested in other applications.

Images

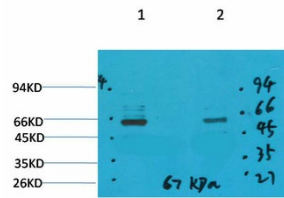


Immunohistochemical analysis of paraffin-embedded Rat Brain Tissue using GABA Transporter 1 Rabbit pAb diluted at 1:200.



Immunohistochemical analysis of paraffin-embedded Mouse Brain Tissue using GABA Transporter 1 Rabbit pAb diluted at 1:200.

Western blot analysis of 1) Mouse Brain Tissue, 2) Rat Brain Tissue with GABA Transporter 1 Rabbit pAb diluted at 1:2,000.



Storage

-20°C for 1 year

501 Changsheng S Rd, Nanhu Dist, Jiaxing, Zhejiang, China

Tel: 86 21 31007137 | E-mail: save@bt-laboratory.com | www.bt-laboratory.com