

GATA-1(Phospho Ser310) Polyclonal Antibody

Description

Product type	Primary Antibody
Code	BT-AP15698
Host	Rabbit
Isotype	IgG
Size	20ul, 50ul, 100ul
Immunogen	The antiserum was produced against synthesized peptide derived from human GATA1 around the phosphorylation site of Ser310. AA range:277-326
Mol wt	42751
Species reactivity	Human, Mouse, Rat, Monkey
Clonality	Polyclonal
Recommended application	WB, ELISA
Concentration	1 mg/ml
Full name	Erythroid transcription factor
Synonyms	Erythroid transcription factor; GATA1; ERYF1; GF1; Erythroid transcription factor; Eryf1; GATA-binding factor 1; GATA-1; GF-1; NF-E1 DNA-binding protein

This product is for research use only, not for use in human, therapeutic or diagnostic procedure.

Background

This gene encodes a protein which belongs to the GATA family of transcription factors. The protein plays an important role in erythroid development by regulating the switch of fetal hemoglobin to adult hemoglobin. Mutations in this gene have been associated with X-linked dyserythropoietic anemia and thrombocytopenia.

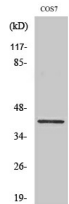
Recommended Dilution

WB: 1: 500 - 1: 2000

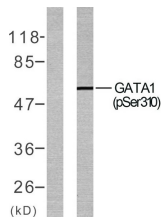
ELISA: 1: 20000

Not yet tested in other applications.

Images



Western Blot analysis of various cells using Phospho-GATA-1 (S310) Polyclonal Antibody diluted at 1:500



Western blot analysis of lysates from COS7 cells treated with EPO, using GATA1 (Phospho-Ser310) Antibody. The lane on the left is blocked with the phospho peptide.

Storage

-20°C for 1 year

501 Changsheng S Rd, Nanhu Dist, Jiaxing, Zhejiang, China

Tel: 86 21 31007137 | E-mail: save@bt-laboratory.com | www.bt-laboratory.com