

GCK/GLK Polyclonal Antibody

Description

Product type	Primary Antibody
Code	BT-AP15711
Host	Rabbit
Isotype	IgG
Size	20ul, 50ul, 100ul
Immunogen	Synthesized peptide derived from human GCK/GLK. at AA range: 221-270
Mol wt	N/A
Species reactivity	Human, Rat
Clonality	Polyclonal
Recommended application	WB, ELISA
Concentration	1 mg/ml
Full name	GCK/GLK
Synonyms	GCK/GLK; Mitogen-activated protein kinase kinase kinase kinase 2; EC 2.7.11.1; B lymphocyte serine/threonine-protein kinase; Germinal center kinase; GC kinase; MAPK/ERK kinase kinase kinase 2; MEK kinase kinase 2; MEKKK 2; Rab8-interacting protein Mitogen-activated protein kinase kinase kinase 3; EC 2.7.11.1; Germinal center kinase-related protein kinase; GLK; MAPK/ERK kinase kinase kinase 3; MEK kinase kinase 3; MEKKK 3

This product is for research use only, not for use in human, therapeutic or diagnostic procedure.

Background

The protein encoded by this gene is a member of the serine/threonine protein kinase family. Although this kinase is found in many tissues, its expression in lymphoid follicles is restricted to the cells of germinal centre, where it may participate in B-cell differentiation. This kinase can be activated by TNF-alpha, and has been shown to specifically activate MAP kinases. This kinase is also found to interact with TNF receptor-associated factor 2 (TRAF2), which is involved in the activation of MAP3K1/MEKK1. Alternative splicing results in multiple transcript variants.

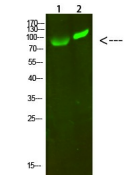
Recommended Dilution

WB: 1: 500 - 1: 2000

ELISA: 1: 10000 - 1: 20000

Not yet tested in other applications.

Images



Western Blot analysis of 1,293T 2, hela cells using primary antibody diluted at 1:1000(4°C overnight). Secondary antibody: Goat Anti-rabbit IgG IRDye 800(diluted at 1:5000, 25°C, 1 hour)

Storage

-20°C for 1 year

