

Zyxin(Phospho Ser142) Polyclonal Antibody

Description

Product type	Primary Antibody
Code	BT-AP15722
Host	Rabbit
Isotype	IgG
Size	20ul, 50ul, 100ul
Immunogen	The antiserum was produced against synthesized peptide derived from human Zyxin around the phosphorylation site of Ser142. AA range:108-157
Mol wt	61277
Species reactivity	Human, Rat, Mouse
Clonality	Polyclonal
Recommended application	WB, ELISA
Concentration	1 mg/ml
Full name	Zyxin
Synonyms	Zyxin; ZYX; Zyxin; Zyxin-2

This product is for research use only, not for use in human, therapeutic or diagnostic procedure.

Background

Focal adhesions are actin-rich structures that enable cells to adhere to the extracellular matrix and at which protein complexes involved in signal transduction assemble. Zyxin is a zinc-binding phosphoprotein that concentrates at focal adhesions and along the actin cytoskeleton. Zyxin has an N-terminal proline-rich domain and three LIM domains in its C-terminal half. The proline-rich domain may interact with SH3 domains of proteins involved in signal transduction pathways while the LIM domains are likely involved in protein-protein binding. Zyxin may function as a messenger in the signal transduction pathway that mediates adhesion-stimulated changes in gene expression and may modulate the cytoskeletal organization of actin bundles. Alternative splicing results in multiple transcript variants that encode the same isoform.

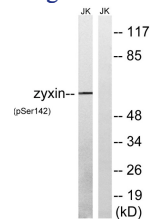
Recommended Dilution

WB: 1: 500 - 1: 2000

ELISA: 1: 5000

Not yet tested in other applications.

Images



Western blot analysis of lysates from Jurkat cells treated with paclitaxel 1uM 24h, using Zyxin (Phospho-Ser142) Antibody. The lane on the right is blocked with the phospho peptide.

Storage

-20°C for 1 year