

## beta II Tubulin Polyclonal Antibody

### Description

Product type	Primary Antibody
Code	BT-AP15730
Host	Rabbit
Isotype	IgG
Size	20ul, 50ul, 100ul
Immunogen	Synthetic Peptide of $\beta$ II Tubulin
Mol wt	N/A
Species reactivity	Human, Mouse, Rat
Clonality	Polyclonal
Recommended application	WB
Concentration	
Full name	Tubulin beta-2A chain
Synonyms	Tubulin beta-2A chain; Tubulin beta-2A chain

This product is for research use only, not for use in human, therapeutic or diagnostic procedure.

### Background

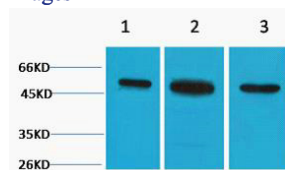
Microtubules, key participants in processes such as mitosis and intracellular transport, are composed of heterodimers of alpha- and beta-tubulins. The protein encoded by this gene is a beta-tubulin. Defects in this gene are associated with complex cortical dysplasia with other brain malformations-5. Two transcript variants encoding distinct isoforms have been found for this gene.

### Recommended Dilution

WB: 1: 2000 - 1: 5000

Not yet tested in other applications.

### Images



Western blot analysis of 1) HeLa, 2) 3T3, 3) Rat Kidney tissue, diluted at 1:3000. Secondary antibody was diluted at 1:20000

### Storage

-20°C for 1 year

501 Changsheng S Rd, Nanhui Dist, Jiading, Zhejiang, China

Tel: 86 21 31007137 | E-mail: [save@bt-laboratory.com](mailto:save@bt-laboratory.com) | [www.bt-laboratory.com](http://www.bt-laboratory.com)