

GGCT Polyclonal Antibody

Description

Product type	Primary Antibody
Code	BT-AP15731
Host	Rabbit
Isotype	IgG
Size	20ul, 50ul, 100ul
Immunogen	Synthesized peptide derived from part region of human protein
Mol wt	N/A
Species reactivity	Human, Mouse
Clonality	Polyclonal
Recommended application	WB, ELISA
Concentration	1 mg/ml
Full name	Gamma-glutamylcyclotransferase
Synonyms	Gamma-glutamylcyclotransferase ;EC 2.3.2.4;Cytochrome c-releasing factor 21

This product is for research use only, not for use in human, therapeutic or diagnostic procedure.

Background

The protein encoded by this gene catalyzes the formation of 5-oxoproline from gamma-glutamyl dipeptides, the penultimate step in glutathione catabolism, and may play a critical role in glutathione homeostasis. The encoded protein may also play a role in cell proliferation, and the expression of this gene is a potential marker for cancer. Pseudogenes of this gene are located on the long arm of chromosome 5 and the short arm of chromosomes 2 and 20. Alternatively spliced transcript variants encoding multiple isoforms have been observed for this gene.

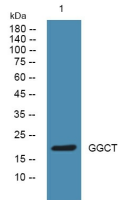
Recommended Dilution

WB: 1: 500 - 1: 2000

ELISA: 1: 5000 - 1: 20000

Not yet tested in other applications.

Images



Western blot analysis of lysates from K562 cells, primary antibody was diluted at 1:1000, 4°C overnight

Storage

-20°C for 1 year