

Ghrelin Receptor Polyclonal Antibody

Description

Product type	Primary Antibody
Code	BT-AP15732
Host	Rabbit
Isotype	IgG
Size	20ul, 50ul, 100ul
Immunogen	Synthetic Peptide of Ghrelin Receptor
Mol wt	N/A
Species reactivity	Human, Rat, Mouse
Clonality	Polyclonal
Recommended application	WB, IHC-p, IF
Concentration	1 mg/ml
Full name	Growth hormone secretagogue receptor type 1
Synonyms	Growth hormone secretagogue receptor type 1 ;GHS-R;GH-releasing peptide receptor;GHRP;Ghrelin receptor; Growth hormone secretagogue receptor type 1; GHS-R; GH-releasing peptide receptor; GHRP; Ghrelin receptor

This product is for research use only, not for use in human, therapeutic or diagnostic procedure.

Background

This gene encodes a member of the G-protein coupled receptor family. The encoded protein may play a role in energy homeostasis and regulation of body weight. Two identified transcript variants are expressed in several tissues and are evolutionary conserved in fish and swine. One transcript, 1a, excises an intron and encodes the functional protein; this protein is the receptor for the Ghrelin ligand and defines a neuroendocrine pathway for growth hormone release. The second transcript (1b) retains the intron and does not function as a receptor for Ghrelin; however, it may function to attenuate activity of isoform 1a. Mutations in this gene are associated with autosomal idiopathic short stature.

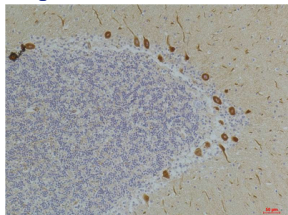
Recommended Dilution

WB: 1: 1000 - 1: 2000

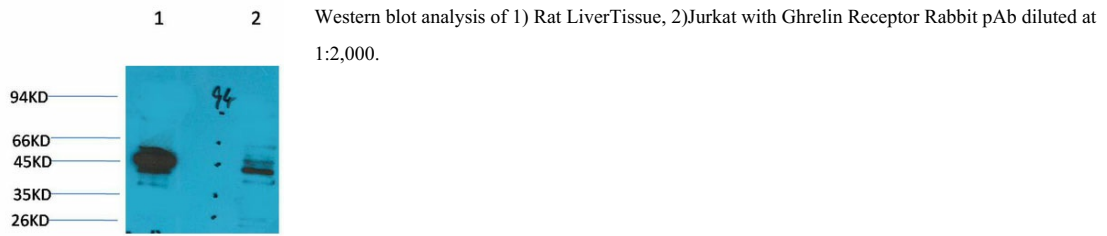
IHC: 1: 100 - 1: 200

Not yet tested in other applications.

Images



Immunohistochemical analysis of paraffin-embedded Human Skin Tissue using Ghrelin Receptor Rabbit pAb diluted at 1:200.



Storage

-20°C for 1 year

501 Changsheng S Rd, Nanhu Dist, Jiaxing, Zhejiang, China

Tel: 86 21 31007137 | E-mail: save@bt-laboratory.com | www.bt-laboratory.com