

Girdin(Phospho Ser1417) Polyclonal Antibody

Description

Product type	Primary Antibody
Code	BT-AP15733
Host	Rabbit
Isotype	IgG
Size	20ul, 50ul, 100ul
Immunogen	The antiserum was produced against synthesized peptide derived from human Girdin around the phosphorylation site of Ser1417. AA range:1383-1432
Mol wt	216042
Species reactivity	Human, Mouse
Clonality	Polyclonal
Recommended application	IHC-p, IF, ELISA
Concentration	1 mg/ml
Full name	Girdin
Synonyms	Girdin; CCDC88A; APE; GRDN; KIAA1212; Girdin; Akt phosphorylation enhancer; APE; Coiled-coil domain-containing protein 88A; G alpha-interacting vesicle-associated protein; GIV; Girders of actin filament; Hook-related protein 1; HkRP1

This product is for research use only, not for use in human, therapeutic or diagnostic procedure.

Background

This gene encodes a member of the Girdin family of coiled-coil domain containing proteins. The encoded protein is an actin-binding protein that is activated by the serine/threonine kinase Akt and plays a role in cytoskeleton remodeling and cell migration. The encoded protein also enhances Akt signaling by mediating phosphoinositide 3-kinase (PI3K)-dependent activation of Akt by growth factor receptor tyrosine kinases and G protein-coupled receptors. Increased expression of this gene and phosphorylation of the encoded protein may play a role in cancer metastasis. Alternatively spliced transcript variants encoding multiple isoforms have been observed for this gene.

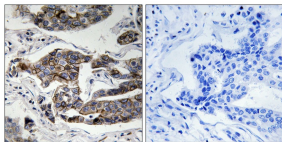
Recommended Dilution

IHC-p: 1: 100 - 1: 300

ELISA: 1: 5000

Not yet tested in other applications.

Images



Immunohistochemistry analysis of paraffin-embedded human breast carcinoma, using Girdin (Phospho-Ser1417) Antibody. The picture on the right is blocked with the phospho peptide.

Storage

-20°C for 1 year