

beta -actin Rabbit Polyclonal Antibody(A284)

Description

| | |
|-------------------------|-------------------------------------|
| Product type | Primary Antibody |
| Code | BT-AP15744 |
| Host | Rabbit |
| Isotype | IgG |
| Size | 20ul, 50ul, 100ul |
| Immunogen | Synthetic Peptide of β -actin |
| Mol wt | N/A |
| Species reactivity | Human, Rat, Mouse |
| Clonality | Polyclonal |
| Recommended application | WB, IHC-p, IF |
| Concentration | 1 mg/ml |
| Full name | ACTB |
| Synonyms | ACTB; ACTB |

This product is for research use only, not for use in human, therapeutic or diagnostic procedure.

Background

This gene encodes one of six different actin proteins. Actins are highly conserved proteins that are involved in cell motility, structure, and integrity. This actin is a major constituent of the contractile apparatus and one of the two nonmuscle cytoskeletal actins.

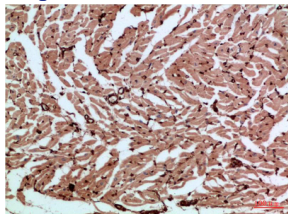
Recommended Dilution

WB: 1: 1000 - 1: 2000

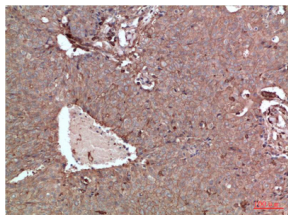
IHC: 1: 100 - 1: 200

Not yet tested in other applications.

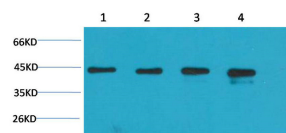
Images



Immunohistochemical analysis of paraffin-embedded Human Heart Tissue using β -actin Rabbit pAb diluted at 1:200



Immunohistochemical analysis of paraffin-embedded Human Breast Carcinoma Tissue using β -actin Rabbit pAb diluted at 1:200.



Western blot analysis of 1) HeLa Cell Lysate, 2) C2C12 Cell Lysate, 3) PC12 Cell Lysate, 4) Rat Brain Tissue Lysate using β -actin Rabbit pAb diluted at 1:5000.

Storage

-20°C for 1 year

501 Changsheng S Rd, Nanhu Dist, Jiaxing, Zhejiang, China

Tel: 86 21 31007137 | E-mail: save@bt-laboratory.com | www.bt-laboratory.com