

GluR4 Polyclonal Antibody

Description

Product type	Primary Antibody
Code	BT-AP15746
Host	Rabbit
Isotype	IgG
Size	20ul, 50ul, 100ul
Immunogen	The antiserum was produced against synthesized peptide derived from human GluR4. AA range:828-877
Mol wt	100810
Species reactivity	Human, Mouse, Rat
Clonality	Polyclonal
Recommended application	WB, IHC-p, IF, ELISA
Concentration	1 mg/ml
Full name	Glutamate receptor 4
Synonyms	Glutamate receptor 4; GRIA4; GLUR4; Glutamate receptor 4; GluR-4; GluR4; AMPA-selective glutamate receptor 4; GluR-D; Glutamate receptor ionotropic; AMPA 4; GluA4

This product is for research use only, not for use in human, therapeutic or diagnostic procedure.

Background

Glutamate receptors are the predominant excitatory neurotransmitter receptors in the mammalian brain and are activated in a variety of normal neurophysiologic processes. These receptors are heteromeric protein complexes composed of multiple subunits, arranged to form ligand-gated ion channels. The classification of glutamate receptors is based on their activation by different pharmacologic agonists. The subunit encoded by this gene belongs to a family of AMPA (alpha-amino-3-hydroxy-5-methyl-4-isoxazole propionate)-sensitive glutamate receptors, and is subject to RNA editing (AGA->GGA; R->G). Alternative splicing of this gene results in transcript variants encoding different isoforms, which may vary in their signal transduction properties. Some haplotypes of this gene show a positive association with schizophrenia.

Recommended Dilution

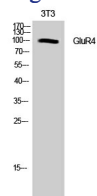
WB: 1: 500 - 1: 2000

IHC-p: 1: 100 - 1: 300

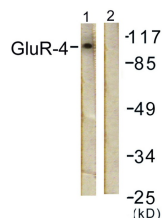
ELISA: 1: 20000

Not yet tested in other applications.

Images



Western Blot analysis of NIH-3T3 cells using GluR4 Polyclonal Antibody



Western blot analysis of lysates from NIH/3T3 cells, treated with Forskolin 40nM 30', using GluR4 Antibody. The lane on the right is blocked with the synthesized peptide.

Storage

-20°C for 1 year

501 Changsheng S Rd, Nanhu Dist, Jiaxing, Zhejiang, China

Tel: 86 21 31007137 | E-mail: save@bt-laboratory.com | www.bt-laboratory.com