

GM-CSF Polyclonal Antibody

Description

Product type	Primary Antibody
Code	BT-AP15750
Host	Rabbit
Isotype	IgG
Size	20ul, 50ul, 100ul
Immunogen	Synthetic peptide from human protein at AA range: 100-144
Mol wt	N/A
Species reactivity	Human, Rat, Mouse
Clonality	Polyclonal
Recommended application	IHC-p, IF, ELISA
Concentration	1 mg/ml
Full name	Granulocyte-macrophage colony-stimulating factor
Synonyms	Granulocyte-macrophage colony-stimulating factor ;GM-CSF;Colony-stimulating factor;CSF;Molgramostin;Sargramostim; Granulocyte-macrophage colony-stimulating factor; GM-CSF; Colony-stimulating factor; CSF; Molgramostin; Sargramostim

This product is for research use only, not for use in human, therapeutic or diagnostic procedure.

Background

The protein encoded by this gene is a cytokine that controls the production, differentiation, and function of granulocytes and macrophages. The active form of the protein is found extracellularly as a homodimer. This gene has been localized to a cluster of related genes at chromosome region 5q31, which is known to be associated with interstitial deletions in the 5q- syndrome and acute myelogenous leukemia. Other genes in the cluster include those encoding interleukins 4, 5, and 13.

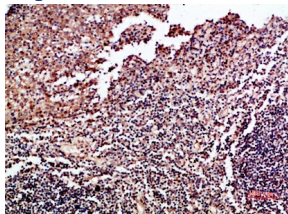
Recommended Dilution

IHC-p: 1: 50 - 1: 200

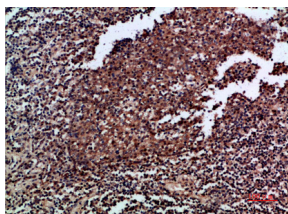
ELISA: 1: 10000 - 1: 20000

Not yet tested in other applications.

Images



Immunohistochemical analysis of paraffin-embedded human-tonsil, antibody was diluted at 1:200



Immunohistochemical analysis of paraffin-embedded human-tonsil, antibody was diluted at 1:200

Storage

-20°C for 1 year

501 Changsheng S Rd, Nanhu Dist, Jiaxing, Zhejiang, China

Tel: 86 21 31007137 | E-mail: save@bt-laboratory.com | www.bt-laboratory.com