

GMF- gamma Polyclonal Antibody

Description

Product type	Primary Antibody
Code	BT-AP15751
Host	Rabbit
Isotype	IgG
Size	20ul, 50ul, 100ul
Immunogen	Synthetic peptide from human protein at AA range: 1-50
Mol wt	N/A
Species reactivity	Human, Rat, Mouse
Clonality	Polyclonal
Recommended application	IHC-p, IF, ELISA
Concentration	1 mg/ml
Full name	Glia maturation factor gamma
Synonyms	Glia maturation factor gamma ;GMF-gamma; Glia maturation factor gamma; GMF-gamma

This product is for research use only, not for use in human, therapeutic or diagnostic procedure.

Background

Belongs to the actin-binding proteins ADF family. GMF subfamily.,Contains 1 ADF-H domain.,tissue specificity:Expressed predominantly in lung, heart and placenta.,

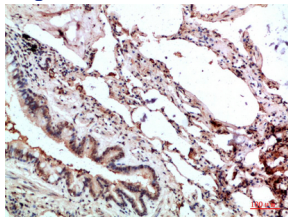
Recommended Dilution

IHC-p: 1: 50 - 1: 200

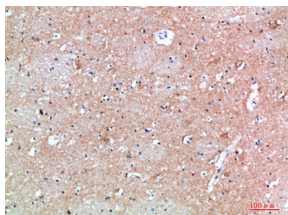
ELISA: 1: 10000 - 1: 20000

Not yet tested in other applications.

Images



Immunohistochemical analysis of paraffin-embedded human-lung, antibody was diluted at 1:200



Immunohistochemical analysis of paraffin-embedded human-brain, antibody was diluted at 1:200

Storage

-20°C for 1 year