

## GPR78 Polyclonal Antibody

### Description

|                                |   |
|--------------------------------|---|
| <b>Product type</b>            | Primary Antibody  |
| <b>Code</b>                    | BT-AP15771  |
| <b>Host</b>                    | Rabbit  |
| <b>Isotype</b>                 | IgG   |
| <b>Size</b>                    | 20ul, 50ul, 100ul   |
| <b>Immunogen</b>               | Synthesized peptide derived from human protein . at AA range: 290-370 |
| <b>Mol wt</b>                  | N/A   |
| <b>Species reactivity</b>      | Human, Rat, Mouse   |
| <b>Clonality</b>               | Polyclonal  |
| <b>Recommended application</b> | WB, ELISA   |
| <b>Concentration</b>           | 1 mg/ml   |
| <b>Full name</b>               | G-protein coupled receptor 78   |
| <b>Synonyms</b>                | G-protein coupled receptor 78   |

This product is for research use only, not for use in human, therapeutic or diagnostic procedure.

### Background

The protein encoded by this gene belongs to the G protein-coupled receptor family, which contain 7 transmembrane domains and transduce extracellular signals through heterotrimeric G proteins. This is an orphan receptor, which displays significant level of constitutive activity. Association analysis shows preliminary evidence for the involvement of this gene in susceptibility to bipolar affective disorder and schizophrenia. Alternatively spliced transcript variants have been found for this gene.

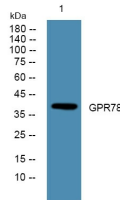
### Recommended Dilution

WB: 1: 500 - 1: 2000

ELISA: 1: 5000 - 1: 20000

Not yet tested in other applications.

### Images



Western blot analysis of lysates from A431 cells, primary antibody was diluted at 1:1000, 4°C overnight

### Storage

-20°C for 1 year