

## GRB7 Polyclonal Antibody

### Description

Product type	Primary Antibody
Code	BT-AP15778
Host	Rabbit
Isotype	IgG
Size	20ul, 50ul, 100ul
Immunogen	Synthetic peptide from human protein at AA range: 30-100
Mol wt	N/A
Species reactivity	Human, Mouse, Rat
Clonality	Polyclonal
Recommended application	IHC-p, IF, ELISA
Concentration	1 mg/ml
Full name	Growth factor receptor-bound protein 7
Synonyms	Growth factor receptor-bound protein 7 ;B47;Epidermal growth factor receptor GRB-7;GRB7 adapter protein; Growth factor receptor-bound protein 7; B47; Epidermal growth factor receptor GRB-7; GRB7 adapter protein

This product is for research use only, not for use in human, therapeutic or diagnostic procedure.

### Background

The product of this gene belongs to a small family of adapter proteins that are known to interact with a number of receptor tyrosine kinases and signaling molecules. This gene encodes a growth factor receptor-binding protein that interacts with epidermal growth factor receptor (EGFR) and ephrin receptors. The protein plays a role in the integrin signaling pathway and cell migration by binding with focal adhesion kinase (FAK). Several transcript variants encoding two different isoforms have been found for this gene.

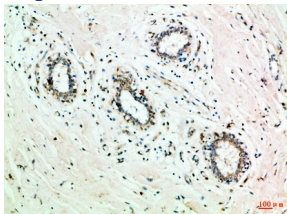
### Recommended Dilution

IHC-p: 1: 50 - 1: 200

ELISA: 1: 10000 - 1: 20000

Not yet tested in other applications.

### Images



Immunohistochemical analysis of paraffin-embedded Human-breast, antibody was diluted at 1:100

### Storage

-20°C for 1 year