

GRF-1(Phospho Tyr1105) Polyclonal Antibody

Description

Product type	Primary Antibody
Code	BT-AP15780
Host	Rabbit
Isotype	IgG
Size	20ul, 50ul, 100ul
Immunogen	The antiserum was produced against synthesized peptide derived from human GRF-1 around the phosphorylation site of Tyr1105. AA range:1071-1120
Mol wt	172229
Species reactivity	Human, Mouse, Rat
Clonality	Polyclonal
Recommended application	WB, IHC-p, IF, ELISA
Concentration	1 mg/ml
Full name	Rho GTPase-activating protein 35
Synonyms	Rho GTPase-activating protein 35; ARHGAP35; GRF1; GRLF1; KIAA1722; Rho GTPase-activating protein 35; Glucocorticoid receptor DNA-binding factor 1; Glucocorticoid receptor repression factor 1; GRF-1; Rho GAP p190A; p190-A

This product is for research use only, not for use in human, therapeutic or diagnostic procedure.

Background

The human glucocorticoid receptor DNA binding factor, which associates with the promoter region of the glucocorticoid receptor gene (hGR gene), is a repressor of glucocorticoid receptor transcription. The amino acid sequence deduced from the cDNA sequences show the presence of three sequence motifs characteristic of a zinc finger and one motif suggestive of a leucine zipper in which 1 cysteine is found instead of all leucines. The GRLF1 enhances the homologous down-regulation of wild-type hGR gene expression. Biochemical analysis suggests that GRLF1 interaction is sequence specific and that transcriptional efficacy of GRLF1 is regulated through its interaction with specific sequence motif. The level of expression is regulated by glucocorticoids.

Recommended Dilution

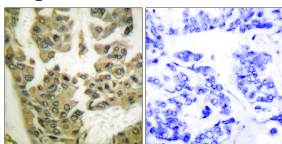
WB: 1: 500 - 1: 2000

IHC-p: 1: 100 - 1: 300

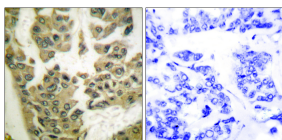
ELISA: 1: 10000

Not yet tested in other applications.

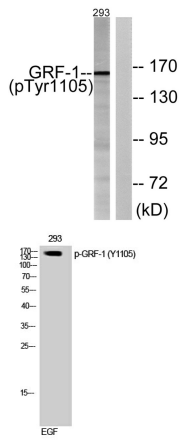
Images



Immunohistochemical analysis of paraffin-embedded Human Fallopian tube. 1, Antibody was diluted at 1:400(4°C overnight). 2, High-pressure and temperature EDTA, pH8.0 was used for antigen retrieval. 3,Secondary antibody was diluted at 1:200(room temperature, 30min).



Immunohistochemistry analysis of paraffin-embedded human breast carcinoma, using GRF-1 (Phospho-Tyr1105) Antibody. The picture on the right is blocked with the phospho peptide.



Western Blot analysis of 3T3 cells using Phospho-GRF-1 (Y1105) Polyclonal Antibody

Western blot analysis of lysates from 293 cells treated with EGF 200ng/ml 30', using GRF-1 (Phospho-Tyr1105) Antibody. The lane on the right is blocked with the phospho peptide.

Storage

-20°C for 1 year

501 Changsheng S Rd, Nanhu Dist, Jiaxing, Zhejiang, China

Tel: 86 21 31007137 | E-mail: save@bt-laboratory.com | www.bt-laboratory.com