

GRK 2(Phospho Ser685) Polyclonal Antibody

Description

Product type	Primary Antibody
Code	BT-AP15789
Host	Rabbit
Isotype	IgG
Size	20ul, 50ul, 100ul
Immunogen	The antiserum was produced against synthesized peptide derived from human GRK2 around the phosphorylation site of Ser685. AA range:640-689
Mol wt	79574
Species reactivity	Human, Mouse, Rat
Clonality	Polyclonal
Recommended application	WB, ELISA
Concentration	1 mg/ml
Full name	Beta-adrenergic receptor kinase 1
Synonyms	Beta-adrenergic receptor kinase 1; ADRBK1; BARK; BARK1; GRK2; Beta-adrenergic receptor kinase 1; Beta-ARK-1; G-protein coupled receptor kinase 2

This product is for research use only, not for use in human, therapeutic or diagnostic procedure.

Background

The product of this gene phosphorylates the beta-2-adrenergic receptor and appears to mediate agonist-specific desensitization observed at high agonist concentrations. This protein is an ubiquitous cytosolic enzyme that specifically phosphorylates the activated form of the beta-adrenergic and related G-protein-coupled receptors. Abnormal coupling of beta-adrenergic receptor to G protein is involved in the pathogenesis of the failing heart.

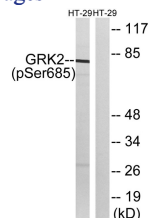
Recommended Dilution

WB: 1: 500 - 1: 2000

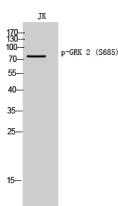
ELISA: 1: 5000

Not yet tested in other applications.

Images



Western Blot analysis of JK cells using Phospho-GRK 2 (S685) Polyclonal Antibody diluted at 1:500



Western blot analysis of lysates from HT29 cells treated with insulin 0.01U/ml 15', using GRK2 (Phospho-Ser685) Antibody. The lane on the right is blocked with the phospho peptide.

Storage

-20°C for 1 year

501 Changsheng S Rd, Nanhu Dist, Jiaxing, Zhejiang, China

Tel: 86 21 31007137 | E-mail: save@bt-laboratory.com | www.bt-laboratory.com