

## GRO alpha Polyclonal Antibody

### Description

<b>Product type</b>	Primary Antibody
<b>Code</b>	BT-AP15792
<b>Host</b>	Rabbit
<b>Isotype</b>	IgG
<b>Size</b>	20ul, 50ul, 100ul
<b>Immunogen</b>	The antiserum was produced against synthesized peptide derived from human GROalpha. AA range:39-88
<b>Mol wt</b>	11301
<b>Species reactivity</b>	Human, Mouse, Rat
<b>Clonality</b>	Polyclonal
<b>Recommended application</b>	IHC-p, IF, ELISA
<b>Concentration</b>	1 mg/ml
<b>Full name</b>	Growth-regulated alpha protein
<b>Synonyms</b>	Growth-regulated alpha protein; CXCL1; GRO; GRO1; GROA; MGSA; SCYB1; Growth-regulated alpha protein; C-X-C motif chemokine 1; GRO-alpha;1-73; Melanoma growth stimulatory activity; MGSA; Neutrophil-activating protein 3; NAP-3

**This product is for research use only, not for use in human, therapeutic or diagnostic procedure.**

### Background

This antimicrobial gene encodes a member of the CXC subfamily of chemokines. The encoded protein is a secreted growth factor that signals through the G-protein coupled receptor, CXC receptor 2. This protein plays a role in inflammation and as a chemoattractant for neutrophils. Aberrant expression of this protein is associated with the growth and progression of certain tumors. A naturally occurring processed form of this protein has increased chemotactic activity. Alternate splicing results in coding and non-coding variants of this gene. A pseudogene of this gene is found on chromosome 4.

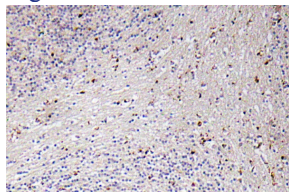
### Recommended Dilution

IHC-p: 1: 100 - 1: 300

ELISA: 1: 10000

Not yet tested in other applications.

### Images



Immunohistochemistry analysis of GRO $\alpha$  antibody in paraffin-embedded human brain tissue.

### Storage

-20°C for 1 year