

## GSK3 alpha(Phospho Ser21) Polyclonal Antibody

### Description

<b>Product type</b>	Primary Antibody
<b>Code</b>	BT-AP15798
<b>Host</b>	Rabbit
<b>Isotype</b>	IgG
<b>Size</b>	20ul, 50ul, 100ul
<b>Immunogen</b>	The antiserum was produced against synthesized peptide derived from human GSK3 alpha around the phosphorylation site of Ser21. AA range:10-59
<b>Mol wt</b>	50981
<b>Species reactivity</b>	Human, Mouse, Rat
<b>Clonality</b>	Polyclonal
<b>Recommended application</b>	WB, IHC-p, IF, IP, ELISA
<b>Concentration</b>	1 mg/ml
<b>Full name</b>	Glycogen synthase kinase-3 alpha
<b>Synonyms</b>	Glycogen synthase kinase-3 alpha; GSK3A; Glycogen synthase kinase-3 alpha; GSK-3 alpha; Serine/threonine-protein kinase GSK3A

**This product is for research use only, not for use in human, therapeutic or diagnostic procedure.**

### Background

This gene encodes a multifunctional Ser/Thr protein kinase that is implicated in the control of several regulatory proteins including glycogen synthase, and transcription factors, such as JUN. It also plays a role in the WNT and PI3K signaling pathways, as well as regulates the production of beta-amyloid peptides associated with Alzheimer's disease.

### Recommended Dilution

WB: 1: 500 - 1: 2000

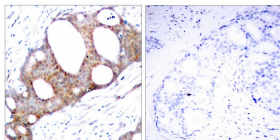
IP: 2 - 5 ug: mg

IHC-p: 1: 100 - 1: 300

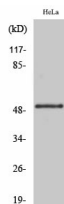
ELISA: 1: 20000

Not yet tested in other applications.

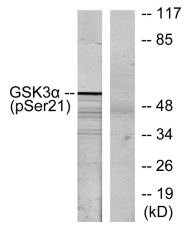
### Images



Immunohistochemistry analysis of paraffin-embedded human breast carcinoma, using GSK3 alpha (Phospho-Ser21) Antibody. The picture on the right is blocked with the phospho peptide.



Western Blot analysis of various cells using Phospho-GSK3 $\alpha$  (S21) Polyclonal Antibody



Western blot analysis of lysates from ovary cancer, using GSK3 alpha (Phospho-Ser21) Antibody.  
The lane on the right is blocked with the phospho peptide.

### Storage

-20°C for 1 year

501 Changsheng S Rd, Nanhu Dist, Jiaxing, Zhejiang, China

Tel: 86 21 31007137 | E-mail: [save@bt-laboratory.com](mailto:save@bt-laboratory.com) | [www.bt-laboratory.com](http://www.bt-laboratory.com)