

GSK3 beta Polyclonal Antibody

Description

Product type	Primary Antibody
Code	BT-AP15799
Host	Rabbit
Isotype	IgG
Size	20ul, 50ul, 100ul
Immunogen	Recombinant Protein of GSK3 β
Mol wt	N/A
Species reactivity	Mouse, Rat
Clonality	Polyclonal
Recommended application	WB, IHC-p, IF
Concentration	
Full name	Glycogen synthase kinase-3 beta
Synonyms	Glycogen synthase kinase-3 beta; GSK3B; Glycogen synthase kinase-3 beta; GSK-3 beta; Serine/threonine-protein kinase GSK3B

This product is for research use only, not for use in human, therapeutic or diagnostic procedure.

Background

The protein encoded by this gene is a serine-threonine kinase, belonging to the glycogen synthase kinase subfamily. It is involved in energy metabolism, neuronal cell development, and body pattern formation. Polymorphisms in this gene have been implicated in modifying risk of Parkinson disease, and studies in mice show that overexpression of this gene may be relevant to the pathogenesis of Alzheimer disease. Alternatively spliced transcript variants encoding different isoforms have been found for this gene.

Recommended Dilution

WB: 1: 1000 - 1: 2000

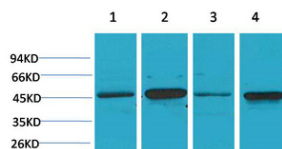
IHC: 1: 200 - 500

Not yet tested in other applications.

Images



Immunohistochemical analysis of paraffin-embedded Mouse Lung Tissue using GSK3 β Polyclonal Antibody.



Western blot analysis of 1) Mouse Brain Tissue, 2) Mouse Heart Tissue, 3) Rat Brain Tissue, 4) Rat Heart Tissue using GSK3 β Polyclonal Antibody. Secondary antibody was diluted at 1:20000

Storage

-20°C for 1 year

501 Changsheng S Rd, Nanhu Dist, Jiaxing, Zhejiang, China

Tel: 86 21 31007137 | E-mail: save@bt-laboratory.com | www.bt-laboratory.com