

GSTA1 Polyclonal Antibody

Description

Product type	Primary Antibody
Code	BT-AP15801
Host	Rabbit
Isotype	IgG
Size	20ul, 50ul, 100ul
Immunogen	The antiserum was produced against synthesized peptide derived from the Internal region of human GSTA1. AA range:91-140
Mol wt	N/A
Species reactivity	Human, Rat, Mouse
Clonality	Polyclonal
Recommended application	IHC-p, IF, ELISA
Concentration	1 mg/ml
Full name	Glutathione S-transferase A1
Synonyms	Glutathione S-transferase A1 ;EC 2.5.1.18;GST HA subunit 1;GST class-alpha member 1;GST-epsilon;GSTA1-1;GTH1; Glutathione S-transferase A1; EC 2.5.1.18; GST HA subunit 1; GST class-alpha member 1; GST-epsilon; GSTA1-1; GTH1

This product is for research use only, not for use in human, therapeutic or diagnostic procedure.

Background

This gene encodes a member of a family of enzymes that function to add glutathione to target electrophilic compounds, including carcinogens, therapeutic drugs, environmental toxins, and products of oxidative stress. This action is an important step in detoxification of these compounds. This subfamily of enzymes has a particular role in protecting cells from reactive oxygen species and the products of peroxidation. Polymorphisms in this gene influence the ability of individuals to metabolize different drugs. This gene is located in a cluster of similar genes and pseudogenes on chromosome 6. Alternative splicing results in multiple transcript variants.

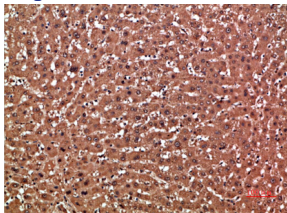
Recommended Dilution

IHC-p: 1: 50 - 1: 200

ELISA: 1: 10000 - 1: 20000

Not yet tested in other applications.

Images



Immunohistochemical analysis of paraffin-embedded human-liver, antibody was diluted at 1:200

Storage

-20°C for 1 year