

## GUC2B Polyclonal Antibody

### Description

Product type	Primary Antibody
Code	BT-AP15806
Host	Rabbit
Isotype	IgG
Size	20ul, 50ul, 100ul
Immunogen	Synthesized peptide derived from part region of human protein
Mol wt	N/A
Species reactivity	Human, Rat, Mouse
Clonality	Polyclonal
Recommended application	WB, ELISA
Concentration	1 mg/ml
Full name	Guanylate cyclase activator 2B [Cleaved into: Guanylate cyclase C-activating peptide 2
Synonyms	Guanylate cyclase activator 2B [Cleaved into: Guanylate cyclase C-activating peptide 2 ;Guanylate cyclase C-activating peptide II;GCAP-II; Uroguanylin ;UGN]

This product is for research use only, not for use in human, therapeutic or diagnostic procedure.

### Background

This gene encodes a preproprotein that is proteolytically processed to generate multiple protein products, including uroguanylin, a member of the guanylin family of peptides and an endogenous ligand of the guanylate cyclase-C receptor. Binding of this peptide to its cognate receptor stimulates an increase in cyclic GMP and may regulate salt and water homeostasis in the intestine and kidneys.

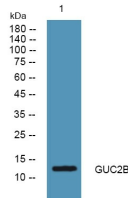
### Recommended Dilution

WB: 1: 500 - 1: 2000

ELISA: 1: 5000 - 1: 20000

Not yet tested in other applications.

### Images



Western blot analysis of lysates from K562 cells, primary antibody was diluted at 1:1000, 4°C overnight

### Storage

-20°C for 1 year