

## Actin beta Rabbit Polyclonal Antibody

### Description

<b>Product type</b>	Primary Antibody
<b>Code</b>	BT-AP15890
<b>Host</b>	Rabbit
<b>Isotype</b>	IgG
<b>Size</b>	20ul, 50ul, 100ul
<b>Immunogen</b>	Synthetic Peptide of $\beta$ -actin
<b>Mol wt</b>	41737
<b>Species reactivity</b>	Human, Mouse, Rat, Fish, Chicken
<b>Clonality</b>	Polyclonal
<b>Recommended application</b>	WB, IHC-p, IF, ELISA
<b>Concentration</b>	1 mg/ml
<b>Full name</b>	ACTB
<b>Synonyms</b>	ACTB; ACTB

This product is for research use only, not for use in human, therapeutic or diagnostic procedure.

### Background

This gene encodes one of six different actin proteins. Actins are highly conserved proteins that are involved in cell motility, structure, and integrity. This actin is a major constituent of the contractile apparatus and one of the two nonmuscle cytoskeletal actins.

### Recommended Dilution

IF: 1:50 - 1:200

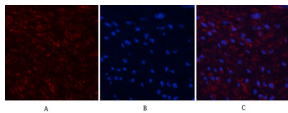
WB: 1:2000 - 1:10000

IHC: 1:100 - 1:300

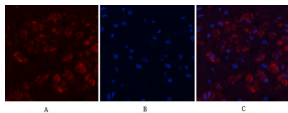
ELISA: 1:20000

Not yet tested in other applications.

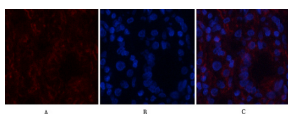
### Images



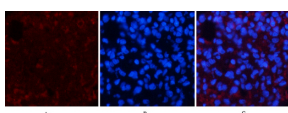
Immunofluorescence analysis of human-uterus tissue. Actin beta Polyclonal Antibody(red) was diluted at 1: 200(4°C, overnight). Cy3 labeled Secondary antibody was diluted at 1: 300 at room temperature for 50 mins. Picture B: DAPI(blue) 10 mins. Picture A: Target. Picture B: DAPI. Picture C: merge of A+B



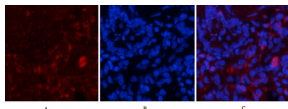
Immunofluorescence analysis of human-stomach tissue. Actin beta Polyclonal Antibody(red) was diluted at 1: 200(4°C,overnight). Cy3 labeled Secondary antibody was diluted at 1: 300 at room temperature for 50mins). Picture B: DAPI(blue) 10min. Picture A: Target. Picture B: DAPI. Picture C: merge of A+B



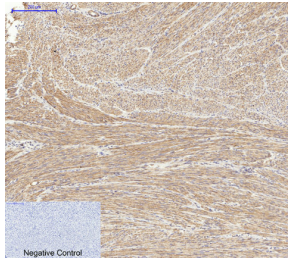
Immunofluorescence analysis of human-stomach tissue. Actin beta Polyclonal Antibody(red) was diluted at 1:200(4°C,overnight). Cy3 labeled Secondary antibody was diluted at 1: 300 at room temperature for 50mins. Picture B: DAPI(blue) 10min. Picture A: Target. Picture B: DAPI. Picture C: merge of A+B



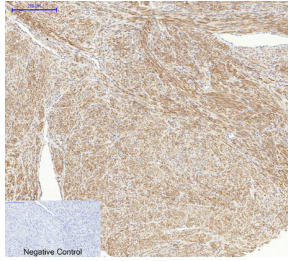
Immunofluorescence analysis of rat-lung tissue. Actin beta Polyclonal Antibody(red) was diluted at 1: 200(4°C,overnight). Cy3 labeled Secondary antibody was diluted at 1: 300 at room temperature for 50mins. Picture B: DAPI(blue) 10min. Picture A: Target. Picture B: DAPI. Picture C: merge of A+B



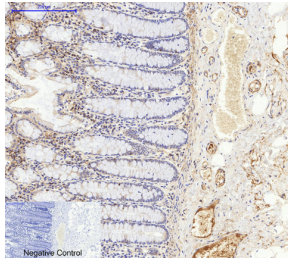
Immunofluorescence analysis of rat-lung tissue. Actin beta Polyclonal Antibody(red) was diluted at 1:200(4°C,overnight). Cy3 labeled Secondary antibody was diluted at 1: 300 at room temperature for 50mins. Picture B: DAPI(blue) 10min. Picture A: Target. Picture B: DAPI. Picture C: merge of A+B



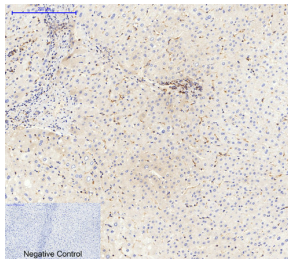
Immunohistochemical analysis of paraffin-embedded Human-uterus tissue. Actin beta Polyclonal Antibody was diluted at 1: 200(4°C,overnight). Sodium citrate pH 6.0 was used for antibody retrieval(>98°C,20 mins). Secondary antibody was diluted at 1: 200(room temperature, 30 mins). Negative control was used by secondary antibody only.



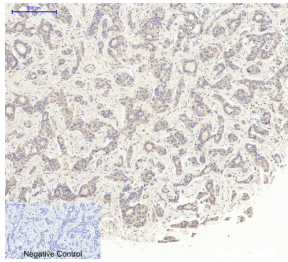
Immunohistochemical analysis of paraffin-embedded Human-uterus-cancer tissue. Actin beta Polyclonal Antibody was diluted at 1: 200(4°C,overnight). Sodium citrate pH 6.0 was used for antibody retrieval(>98°C,20min). Secondary antibody was diluted at 1: 200(room temperature, 30min). Negative control was used by secondary antibody only.



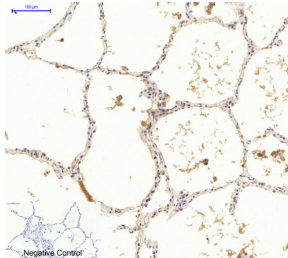
Immunohistochemical analysis of paraffin-embedded Human-colon tissue. Actin beta Polyclonal Antibody was diluted at 1: 200(4°C,overnight). Sodium citrate pH 6.0 was used for antibody retrieval(>98°C,20 min). Secondary antibody was diluted at 1: 200(room temperature, 30 min). Negative control was used by secondary antibody only.



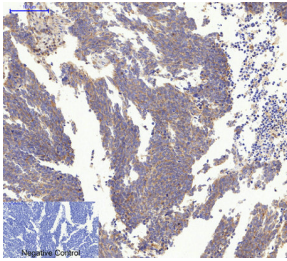
Immunohistochemical analysis of paraffin-embedded Human-liver tissue. Actin beta Polyclonal Antibody was diluted at 1:200(4°C,overnight). Sodium citrate pH 6.0 was used for antibody retrieval(>98°C,20 min). Secondary antibody was diluted at 1:200(room temperature, 30 min). Negative control was used by secondary antibody only.



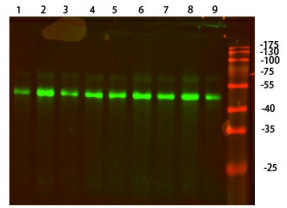
Immunohistochemical analysis of paraffin-embedded Human-liver-cancer tissue. Actin beta Polyclonal Antibody was diluted at 1: 200(4°C,overnight). Sodium citrate pH 6.0 was used for antibody retrieval(>98°C, 20 min). Secondary antibody was diluted at 1: 200(room temperature, 30 min). Negative control was used by secondary antibody only.



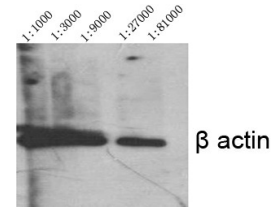
Immunohistochemical analysis of paraffin-embedded Human-lung tissue. Actin beta Polyclonal Antibody was diluted at 1: 200(4°C,overnight). Sodium citrate pH 6.0 was used for antibody retrieval(>98°C, 20 min). Secondary antibody was diluted at 1: 200(room temperature, 30 min). Negative control was used by secondary antibody only.



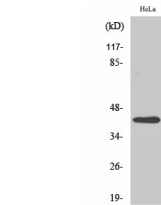
Immunohistochemical analysis of paraffin-embedded Human-lung-cancer tissue. Actin beta Polyclonal Antibody was diluted at 1: 200(4°C,overnight). Sodium citrate pH 6.0 was used for antibody retrieval(>98°C,20 min). Secondary antibody was diluted at 1: 200(room temperature, 30 min). Negative control was used by secondary antibody only.



Western Blot analysis of 1, hela 2, A549 3, HEPG2 4, Mouse-brain 5, Mouse-lung 6, Mouse-liver 7, Rat-brain 8, Rat-lung 9, Rat-liver cells using primary antibody diluted at 1: 1000(4°C overnight). Secondary antibody: Goat Anti-rabbit IgG IRDye 800( diluted at 1: 5000, 25°C, 1 hour). Cell lysate was extracted by Minute™ Plasma Membrane Protein Isolation and Cell Fractionation Kit (SM-005, Inventbiotech, MN, USA).



Western Blot analysis of various cells using Actin beta Polyclonal Antibody diluted at 1: 2000



Western Blot analysis of HeLa cells using Actin beta Polyclonal Antibody diluted at 1: 2000

### Storage

-20°C for 1 year

501 Changsheng S Rd, Nanhu Dist, Jiaxing, Zhejiang, China

Tel: 86 21 31007137 | E-mail: [save@bt-laboratory.com](mailto:save@bt-laboratory.com) | [www.bt-laboratory.com](http://www.bt-laboratory.com)