

ABCB5 Monoclonal Antibody(11A2)

Description

Product type	Primary Antibody
Code	BT-MCA0001
Host	Mouse
Isotype	IgG
Size	20ul, 50ul, 100ul
Immunogen	Synthetic Peptide of ABCB5
Mol wt	89831
Species reactivity	Human
Clonality	Monoclonal
Recommended application	WB, IHC-p, IF, ICC
Concentration	1 mg/ml
Full name	ATP-binding cassette sub-family B member 5
Synonyms	ABCB5; ATP-binding cassette sub-family B member 5; ABCB5 P-gp; P-glycoprotein ABCB5

This product is for research use only, not for use in human, therapeutic or diagnostic procedure.

Background

ABCB5 belongs to the ATP-binding cassette (ABC) transporter superfamily of integral membrane proteins. These proteins participate in ATP-dependent transmembrane transport of structurally diverse molecules ranging from small ions, sugars, and peptides to more complex organic molecules.

Recommended Dilution

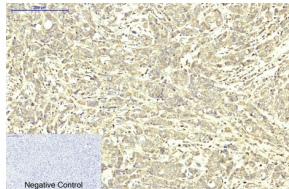
IF: 1:200

IHC: 1:50-300

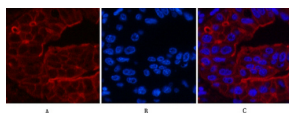
WB: 1:2000

Not yet tested in other applications.

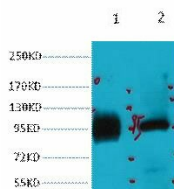
Images



Immunohistochemical analysis of paraffin-embedded Human-breast-cancer tissue. 1.ABCB5 Monoclonal antibody(11A2) was diluted at 1:200(4°C,overnight). 2.Sodium citrate pH 6.0 was used for antibody retrieval(>98°C,20min). 3.Secondary antibody was diluted at 1:200(room temperature, 30min). Negative control was used by secondary antibody only.



Immunofluorescence analysis of Human-liver-cancer tissue. 1.ABCB5 Monoclonal antibody(11A2) (red) was diluted at 1:200(4°C,overnight). 2. Cy3 labeled Secondary antibody was diluted at 1:300(room temperature, 50min).3. Picture B: DAPI(blue) 10min. Picture A:Target. Picture B: DAPI. Picture C: merge of A+B



Western blot analysis of 1) HeLa, 2) 293T diluted at 1:2000.

Storage

-20°C for one year

501 Changsheng S Rd, Nanhu Dist, Jiaxing, Zhejiang, China

Tel: 86 21 31007137 | E-mail: save@bt-laboratory.com | www.bt-laboratory.com