

## Alpha Lactalbumin Monoclonal Antibody(9E9)

### Description

<b>Product type</b>	Primary Antibody
<b>Code</b>	BT-MCA0005
<b>Host</b>	Mouse
<b>Isotype</b>	IgG
<b>Size</b>	20ul, 50ul, 100ul
<b>Immunogen</b>	Synthetic Peptide of alpha Lactalbumin
<b>Mol wt</b>	N/A
<b>Species reactivity</b>	Human
<b>Clonality</b>	Monoclonal
<b>Recommended application</b>	WB, IHC-p, IF, ICC
<b>Concentration</b>	1 mg/ml
<b>Full name</b>	Alpha-lactalbumin
<b>Synonyms</b>	Alpha-lactalbumin; Lactose synthase B protein; Lysozyme-like protein 7

**This product is for research use only, not for use in human, therapeutic or diagnostic procedure.**

### Background

This gene encodes alpha-lactalbumin, a principal protein of milk. Alpha-lactalbumin forms the regulatory subunit of the lactose synthase (LS) heterodimer and beta 1,4-galactosyltransferase (beta4Gal-T1) forms the catalytic component. Together, these proteins enable LS to produce lactose by transferring galactose moieties to glucose. As a monomer, alpha-lactalbumin strongly binds calcium and zinc ions and may possess bactericidal or antitumor activity. A folding variant of alpha-lactalbumin, called HAMLET, likely induces apoptosis in tumor and immature cells.

### Recommended Dilution

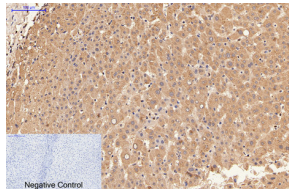
IF: 1:200

IHC: 1:50-300

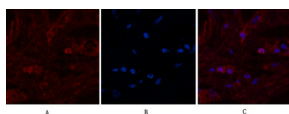
WB: 1:1000

Not yet tested in other applications.

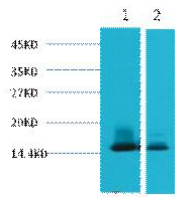
### Images



Immunohistochemical analysis of paraffin-embedded Human-liver tissue. 1.alpha Lactalbumin Monoclonal antibody(9E9) was diluted at 1:200(4°C,overnight). 2.Sodium citrate pH 6.0 was used for antibody retrieval(>98°C,20min). 3.Secondary antibody was diluted at 1:200(room temperature, 30min). Negative control was used by secondary antibody only.



Immunofluorescence analysis of Human-breast tissue. 1.alpha Lactalbumin Monoclonal antibody(9E9)(red) was diluted at 1:200(4°C,overnight). 2. Cy3 labeled Secondary antibody was diluted at 1:300(room temperature, 50min).3. Picture B: DAPI(blue) 10min. Picture A:Target. Picture B: DAPI. Picture C: merge of A+B



Western blot analysis of 1) Human Milk, 2) Milk diluted at 1:3000.

### Storage

-20°C for one year

501 Changsheng S Rd, Nanhu Dist, Jiaxing, Zhejiang, China

Tel: 86 21 31007137 | E-mail: [save@bt-laboratory.com](mailto:save@bt-laboratory.com) | [www.bt-laboratory.com](http://www.bt-laboratory.com)