

AMACR Monoclonal Antibody(4A12)

Description

Product type	Primary Antibody
Code	BT-MCA0006
Host	Mouse
Isotype	IgG
Size	20ul, 50ul, 100ul
Immunogen	Synthetic Peptide of AMACR
Mol wt	42387
Species reactivity	Human,Mouse,Rat
Clonality	Monoclonal
Recommended application	WB, IF, ICC, IHC-p
Concentration	1 mg/ml
Full name	Alpha-methylacyl-CoA racemase
Synonyms	AMACR; Alpha-methylacyl-CoA racemase; 2-methylacyl-CoA racemase

This product is for research use only, not for use in human, therapeutic or diagnostic procedure.

Background

Recommended Dilution

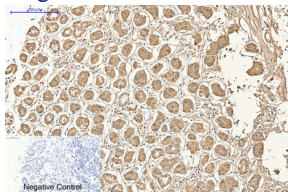
IF: 1:200

IHC: 1:200

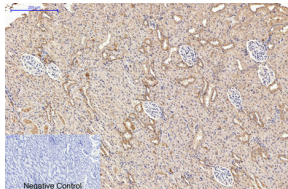
WB: 1:1000

Not yet tested in other applications.

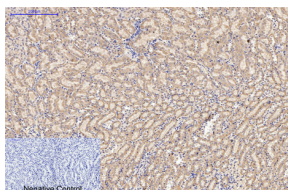
Images



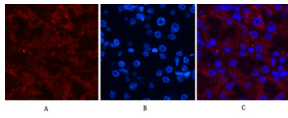
Immunohistochemical analysis of paraffin-embedded Human-stomach tissue. 1.AMACR Monoclonal antibody(4A12) was diluted at 1:200(4°C,overnight). 2.Sodium citrate pH 6.0 was used for antibody retrieval(>98°C,20min). 3.Secondary antibody was diluted at 1:200(room temperature, 30min). Negative control was used by secondary antibody only.



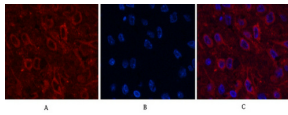
Immunohistochemical analysis of paraffin-embedded Rat-kidney tissue. 1.AMACR Monoclonal antibody(4A12) was diluted at 1:200(4°C,overnight). 2.Sodium citrate pH 6.0 was used for antibody retrieval(>98°C,20min). 3.Secondary antibody was diluted at 1:200(room temperature, 30min). Negative control was used by secondary antibody only.



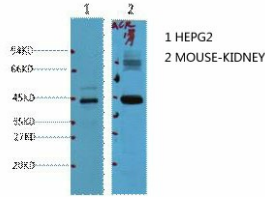
Immunohistochemical analysis of paraffin-embedded Mouse-kidney tissue. 1.AMACR Monoclonal antibody(4A12) was diluted at 1:200(4°C,overnight). 2.Sodium citrate pH 6.0 was used for antibody retrieval(>98°C,20min). 3.Secondary antibody was diluted at 1:200(room temperature, 30min). Negative control was used by secondary antibody only.



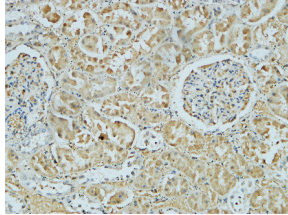
Immunofluorescence analysis of Mouse-kidney tissue. 1.AMACR Monoclonal antibody(4A12)(red) was diluted at 1:200(4°C,overnight). 2. Cy3 labeled Secondary antibody was diluted at 1:300(room temperature, 50min).3. Picture B: DAPI(blue) 10min. Picture A:Target. Picture B: DAPI. Picture C: merge of A+B



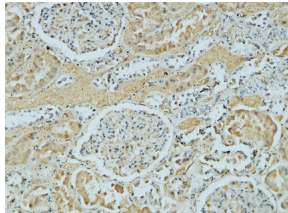
Immunofluorescence analysis of Rat-brain tissue. 1.AMACR Monoclonal antibody(4A12)(red) was diluted at 1:200(4°C,overnight). 2. Cy3 labeled Secondary antibody was diluted at 1:300(room temperature, 50min).3. Picture B: DAPI(blue) 10min. Picture A:Target. Picture B: DAPI. Picture C: merge of A+B



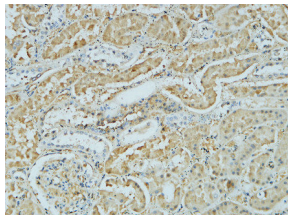
Western blot analysis of 1) HepG2. 2) Mouse Kidney diluted at 1:1000.



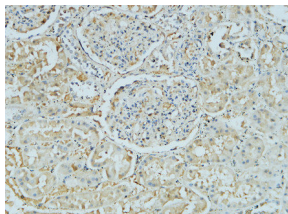
Immunohistochemical analysis of paraffin-embedded Human Right kidney.1.Antibody was diluted at 1:100(4°C overnight). 2.High-pressure and temperature EDTA, pH8.0 was used for antigen retrieval. 3.Secondary antibody was diluted at 1:200(room temperature, 30min).



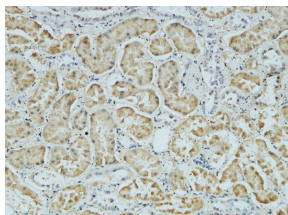
Immunohistochemical analysis of paraffin-embedded Human Right kidney.1.Antibody was diluted at 1:100(4°C overnight). 2.High-pressure and temperature EDTA, pH8.0 was used for antigen retrieval. 3.Secondary antibody was diluted at 1:200(room temperature, 30min).



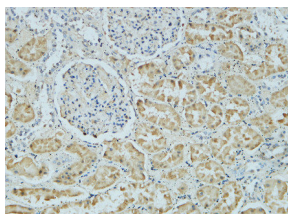
Immunohistochemical analysis of paraffin-embedded Human Right kidney.1.Antibody was diluted at 1:100(4°C overnight). 2.High-pressure and temperature EDTA, pH8.0 was used for antigen retrieval. 3.Secondary antibody was diluted at 1:200(room temperature, 30min).



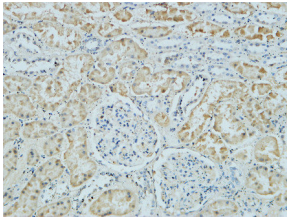
Immunohistochemical analysis of paraffin-embedded Human Right kidney.1.Antibody was diluted at 1:100(4°C overnight). 2.High-pressure and temperature EDTA, pH8.0 was used for antigen retrieval. 3.Secondary antibody was diluted at 1:200(room temperature, 30min).



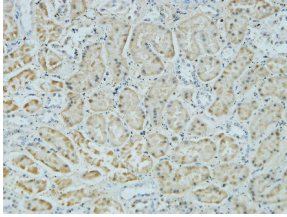
Immunohistochemical analysis of paraffin-embedded Human Right kidney.1.Antibody was diluted at 1:200(4°C overnight). 2.High-pressure and temperature EDTA, pH8.0 was used for antigen retrieval. 3.Secondary antibody was diluted at 1:200(room temperature, 30min).



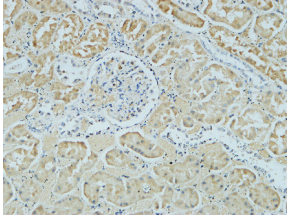
Immunohistochemical analysis of paraffin-embedded Human Right kidney.1.Antibody was diluted at 1:200(4°C overnight). 2.High-pressure and temperature EDTA, pH8.0 was used for antigen retrieval. 3.Secondary antibody was diluted at 1:200(room temperature, 30min).



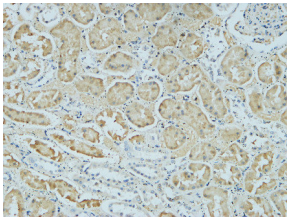
Immunohistochemical analysis of paraffin-embedded Human Right kidney. 1. Antibody was diluted at 1:200(4°C overnight). 2. High-pressure and temperature EDTA, pH8.0 was used for antigen retrieval. 3. Secondary antibody was diluted at 1:200(room temperature, 30min).



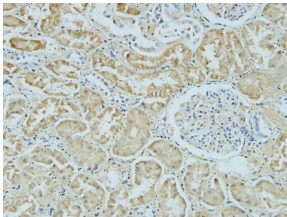
Immunohistochemical analysis of paraffin-embedded Human Right kidney. 1. Antibody was diluted at 1:200(4°C overnight). 2. High-pressure and temperature EDTA, pH8.0 was used for antigen retrieval. 3. Secondary antibody was diluted at 1:200(room temperature, 30min).



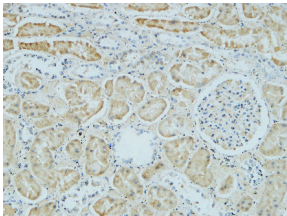
Immunohistochemical analysis of paraffin-embedded Human Right kidney. 1. Antibody was diluted at 1:400(4°C overnight). 2. High-pressure and temperature EDTA, pH8.0 was used for antigen retrieval. 3. Secondary antibody was diluted at 1:200(room temperature, 30min).



Immunohistochemical analysis of paraffin-embedded Human Right kidney. 1. Antibody was diluted at 1:400(4°C overnight). 2. High-pressure and temperature EDTA, pH8.0 was used for antigen retrieval. 3. Secondary antibody was diluted at 1:200(room temperature, 30min).



Immunohistochemical analysis of paraffin-embedded Human Right kidney. 1. Antibody was diluted at 1:400(4°C overnight). 2. High-pressure and temperature EDTA, pH8.0 was used for antigen retrieval. 3. Secondary antibody was diluted at 1:200(room temperature, 30min).



Immunohistochemical analysis of paraffin-embedded Human Right kidney. 1. Antibody was diluted at 1:400(4°C overnight). 2. High-pressure and temperature EDTA, pH8.0 was used for antigen retrieval. 3. Secondary antibody was diluted at 1:200(room temperature, 30min).

Storage

-20°C for one year

501 Changsheng S Rd, Nanhu Dist, Jiaxing, Zhejiang, China

Tel: 86 21 31007137 | E-mail: save@bt-laboratory.com | www.bt-laboratory.com