

ATG5 mouse Monoclonal Antibody(3C7)

Description

Product type	Primary Antibody
Code	BT-MCA0008
Host	Mouse
Isotype	IgG
Size	20ul, 50ul, 100ul
Immunogen	Recombinant Protein of ATG5
Mol wt	N/A
Species reactivity	Human,Mouse,Rat
Clonality	Monoclonal
Recommended application	IF, ICC, WB, IHC-p, IP
Concentration	1 mg/ml
Full name	Autophagy protein 5
Synonyms	Autophagy protein 5; APG5-like; Apoptosis-specific protein; ATG5; APG5L; ASP

This product is for research use only, not for use in human, therapeutic or diagnostic procedure.

Background

The protein encoded by this gene, in combination with autophagy protein 12, functions as an E1-like activating enzyme in a ubiquitin-like conjugating system. The encoded protein is involved in several cellular processes, including autophagic vesicle formation, mitochondrial quality control after oxidative damage, negative regulation of the innate antiviral immune response, lymphocyte development and proliferation, MHC II antigen presentation, adipocyte differentiation, and apoptosis. Several transcript variants encoding different protein isoforms have been found for this gene.

Recommended Dilution

IF: 1:50-200

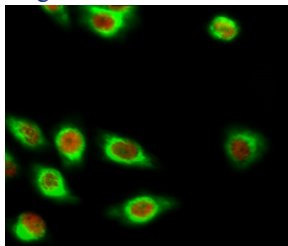
IHC-p: 1:50-300

IP: 1:50-200

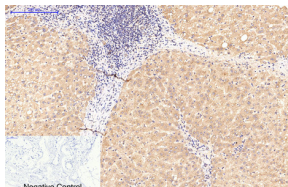
WB: 1:500-2000

Not yet tested in other applications.

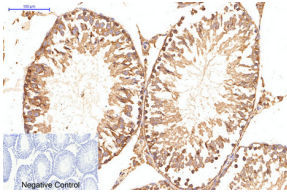
Images



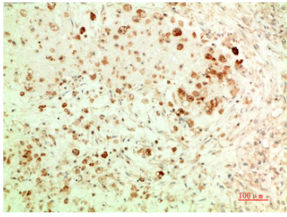
Immunofluorescence analysis of HeLa cell. CREB-1 Polyclonal Antibody(red) was diluted at 1:200(4°C overnight). ATG5 mouse Monoclonal antibody(3C7)(green) was diluted at 1:200(4°C overnight).



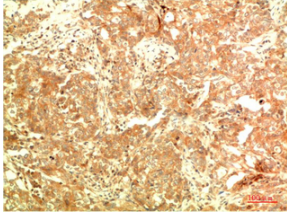
Immunohistochemical analysis of paraffin-embedded Human-breast tissue. 1.ATG5 Mouse Monoclonal antibody(3C7) was diluted at 1:200(4°C,overnight). 2.Sodium citrate pH 6.0 was used for antibody retrieval(>98°C,20min). 3.Secondary antibody was diluted at 1:200(room temperature, 30min). Negative control was used by secondary antibody only.



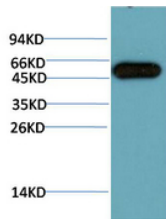
Immunohistochemical analysis of paraffin-embedded Rat-testis tissue. 1.ATG5 Mouse Monoclonal antibody(3C7) was diluted at 1:200(4°C,overnight). 2.Sodium citrate pH 6.0 was used for antibody retrieval(>98°C,20min). 3.Secondary antibody was diluted at 1:200(room temperature, 30min). Negative control was used by secondary antibody only.



Immunohistochemical analysis of paraffin-embedded Human Ovarian Carcinoma Tissue using ATG5 Mouse Monoclonal antibody diluted at 1:200.



Immunohistochemical analysis of paraffin-embedded Human Breast Carcinoma Tissue using ATG5 Mouse Monoclonal antibody diluted at 1:200.



Western blot analysis of HeLa Cell Lysate using ATG5 Mouse Monoclonal antibody diluted at 1:10000

Storage

-20°C for one year

501 Changsheng S Rd, Nanhu Dist, Jiaxing, Zhejiang, China

Tel: 86 21 31007137 | E-mail: save@bt-laboratory.com | www.bt-laboratory.com