

## Bax mouse Monoclonal Antibody(6F11)

### Description

<b>Product type</b>	Primary Antibody
<b>Code</b>	BT-MCA0010
<b>Host</b>	Mouse
<b>Isotype</b>	IgG
<b>Size</b>	20ul, 50ul, 100ul
<b>Immunogen</b>	Synthetic Peptide of Bax at AA range of 30-110
<b>Mol wt</b>	N/A
<b>Species reactivity</b>	Human,Rat,Mouse,Chicken
<b>Clonality</b>	Monoclonal
<b>Recommended application</b>	IF, ICC, WB, IHC-p
<b>Concentration</b>	1 mg/ml
<b>Full name</b>	BAX
<b>Synonyms</b>	BAX

This product is for research use only, not for use in human, therapeutic or diagnostic procedure.

### Background

The protein encoded by BAX (BCL2 associated X, apoptosis regulator) belongs to the BCL2 protein family. BCL2 family members form hetero- or homodimers and act as anti- or pro-apoptotic regulators that are involved in a wide variety of cellular activities. This protein forms a heterodimer with BCL2, and functions as an apoptotic activator. This protein is reported to interact with, and increase the opening of, the mitochondrial voltage-dependent anion channel (VDAC), which leads to the loss in membrane potential and the release of cytochrome c. The expression of this gene is regulated by the tumor suppressor P53 and has been shown to be involved in P53-mediated apoptosis. Multiple alternatively spliced transcript variants, which encode different isoforms, have been reported for BAX.

### Recommended Dilution

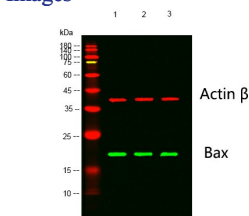
IF: 1:50-200

IHC: 1:100-200

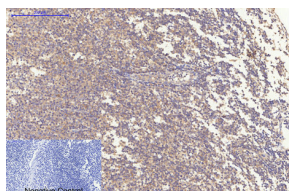
WB: 1:1000-2000

Not yet tested in other applications.

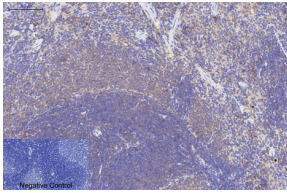
### Images



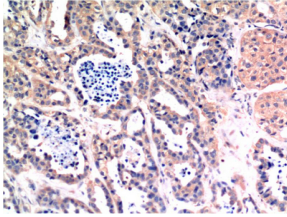
Western blot analysis of lysates from 1) HeLa Cell Lysate, 2) C2C12 Cell Lysate, 3) PC12 Cell Lysate cells, (Green) primary antibody was diluted at 1:1000, 4 $^{\circ}$ overnight, Dylight 800 secondary antibody was diluted at 1:10000, 37 $^{\circ}$ C 1hour. (Red) Actin Beta Polyclonal Antibody antibody was diluted at 1:5000 as loading control, 4 $^{\circ}$ C overnight, Dylight 680 secondary antibody was diluted at 1:10000, 37 $^{\circ}$ C 1hour.



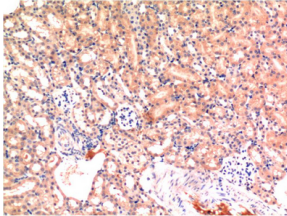
Immunohistochemical analysis of paraffin-embedded Human-Tonsil tissue. 1.Bax Mouse Monoclonal antibody(6F11) was diluted at 1:200(4 $^{\circ}$ C,overnight). 2.Sodium citrate pH 6.0 was used for antibody retrieval(>98 $^{\circ}$ C,20min). 3.Secondary antibody was diluted at 1:200(room temperature, 30min). Negative control was used by secondary antibody only.



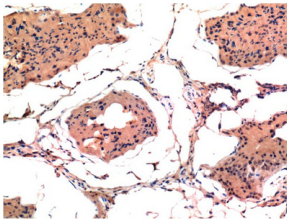
Immunohistochemical analysis of paraffin-embedded Rat-spleen tissue. 1.Bax Mouse Monoclonal antibody(6F11) was diluted at 1:200(4°C,overnight). 2.Sodium citrate pH 6.0 was used for antibody retrieval(>98°C,20min). 3.Secondary antibody was diluted at 1:200(room temperature, 30min). Negative control was used by secondary antibody only.



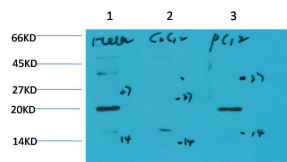
Immunohistochemical analysis of paraffin-embedded Human Breast Carcinoma Tissue using Bax Mouse Monoclonal antibody diluted at 1:200.



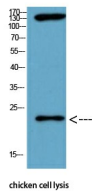
Immunohistochemical analysis of paraffin-embedded Mouse Kidney Tissue using Bax Mouse Monoclonal antibody diluted at 1:200.



Immunohistochemical analysis of paraffin-embedded Rat Testis Tissue using Bax Mouse Monoclonal antibody diluted at 1:200.



Western blot analysis of 1) HeLa Cell Lysate, 2) C2C12 Cell Lysate, 3) PC12 Cell Lysate using Bax Mouse Monoclonal antibody diluted at 1:1000.



Western Blot analysis of chicken cell lysis using Antibody diluted at 1:1000

## Storage

-20°C for one year

501 Changsheng S Rd, Nanhu Dist, Jiaxing, Zhejiang, China

Tel: 86 21 31007137 | E-mail: [save@bt-laboratory.com](mailto:save@bt-laboratory.com) | [www.bt-laboratory.com](http://www.bt-laboratory.com)