

Bcl-2 Monoclonal Antibody(6B5)

Description

Product type	Primary Antibody
Code	BT-MCA0011
Host	Mouse
Isotype	IgG
Size	20ul, 50ul, 100ul
Immunogen	Synthetic Peptide of Bcl-2
Mol wt	26266
Species reactivity	Human,Mouse,Rat,chicken
Clonality	Monoclonal
Recommended application	IF, ICC, WB, IHC-p
Concentration	1 mg/ml
Full name	Apoptosis regulator Bcl-2
Synonyms	BCL2; Apoptosis regulator Bcl-2

This product is for research use only, not for use in human, therapeutic or diagnostic procedure.

Background

N/A

Recommended Dilution

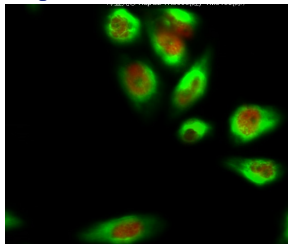
IF: 1:50-200

IHC: 1:200

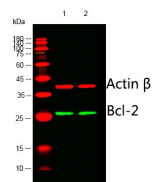
WB: 1:1000-2000

Not yet tested in other applications.

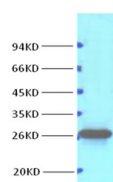
Images



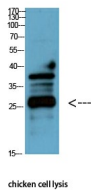
Immunofluorescence analysis of HeLa cell. Dnmt3b Polyclonal Antibody(red) was diluted at 1:200(4°C overnight). Bcl-2 Monoclonal antibody(6B5)(green) was diluted at 1:200(4°C overnight).



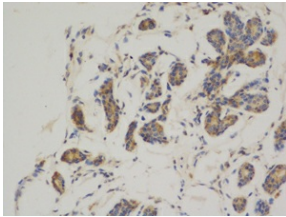
Western blot analysis of lysates from 1)HeLa, 2) MCF-7 cells, (Green) primary antibody was diluted at 1:1000, 4°overnight, secondary antibody was diluted at 1:10000, 37°C 1hour. (Red) Actin Beta Polyclonal Antibody antibody was diluted at 1:5000 as loading control, 4°C overnight,Dylight 680 secondary antibody was diluted at 1:10000, 37°C 1hour.



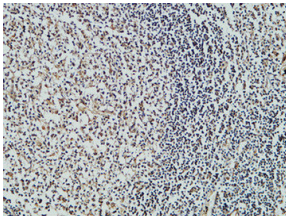
Western blot analysis of HeLa diluted at 1:1000.



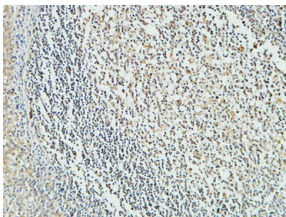
Western Blot analysis of chicken cell lysis using Antibody diluted at 1:1000.



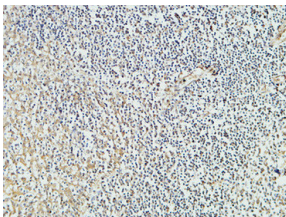
Immunohistochemical analysis of paraffin-embedded Human breast cancer. 1. Using Bcl-2 Mouse Monoclonal antibody (YM3041) diluted at 1:200 (4°C overnight). 2. High-pressure and temperature Citric acid, pH6.0 was used for antigen retrieval. 3. Secondary antibody was diluted at 1:200 (room temperature, 50min). Picture was kindly provided by our customer from Tianjin Medical University Cancer Institute and Hospital



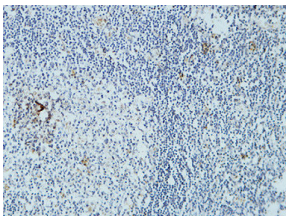
Immunohistochemical analysis of paraffin-embedded Human Lymph gland. 1. Antibody was diluted at 1:100 (4°C overnight). 2. High-pressure and temperature EDTA, pH8.0 was used for antigen retrieval. 3. Secondary antibody was diluted at 1:200 (room temperature, 30min).



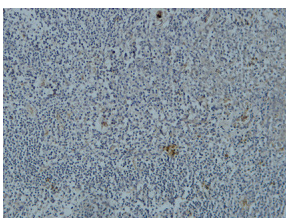
Immunohistochemical analysis of paraffin-embedded Human Lymph gland. 1. Antibody was diluted at 1:100 (4°C overnight). 2. High-pressure and temperature EDTA, pH8.0 was used for antigen retrieval. 3. Secondary antibody was diluted at 1:200 (room temperature, 30min).



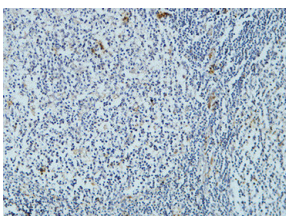
Immunohistochemical analysis of paraffin-embedded Human Lymph gland. 1. Antibody was diluted at 1:100 (4°C overnight). 2. High-pressure and temperature EDTA, pH8.0 was used for antigen retrieval. 3. Secondary antibody was diluted at 1:200 (room temperature, 30min).



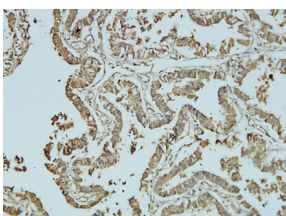
Immunohistochemical analysis of paraffin-embedded Human Lymph gland. 1. Antibody was diluted at 1:200 (4°C overnight). 2. High-pressure and temperature EDTA, pH8.0 was used for antigen retrieval. 3. Secondary antibody was diluted at 1:200 (room temperature, 30min).



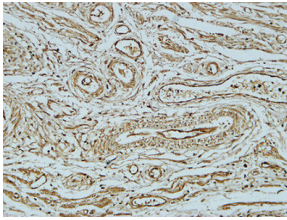
Immunohistochemical analysis of paraffin-embedded Human Lymph gland. 1. Antibody was diluted at 1:200 (4°C overnight). 2. High-pressure and temperature EDTA, pH8.0 was used for antigen retrieval. 3. Secondary antibody was diluted at 1:200 (room temperature, 30min).



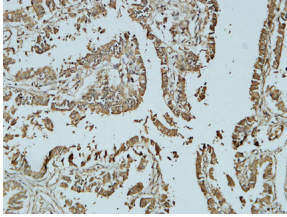
Immunohistochemical analysis of paraffin-embedded Human Lymph gland. 1. Antibody was diluted at 1:200 (4°C overnight). 2. High-pressure and temperature EDTA, pH8.0 was used for antigen retrieval. 3. Secondary antibody was diluted at 1:200 (room temperature, 30min).



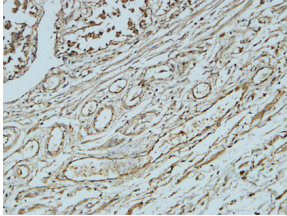
Immunohistochemical analysis of paraffin-embedded Human Fallopian tube. 1. Antibody was diluted at 1:100 (4°C overnight). 2. High-pressure and temperature EDTA, pH8.0 was used for antigen retrieval. 3. Secondary antibody was diluted at 1:200 (room temperature, 30min).



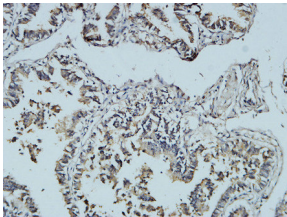
Immunohistochemical analysis of paraffin-embedded Human Fallopian tube.1.Antibody was diluted at 1:100(4°C overnight). 2.High-pressure and temperature EDTA, pH8.0 was used for antigen retrieval. 3.Secondary antibody was diluted at 1:200(room temperature, 30min).



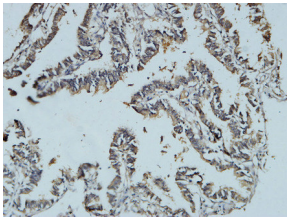
Immunohistochemical analysis of paraffin-embedded Human Fallopian tube.1.Antibody was diluted at 1:100(4°C overnight). 2.High-pressure and temperature EDTA, pH8.0 was used for antigen retrieval. 3.Secondary antibody was diluted at 1:200(room temperature, 30min).



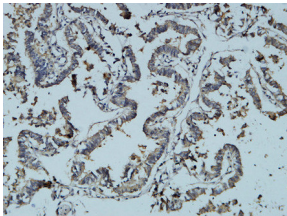
Immunohistochemical analysis of paraffin-embedded Human Fallopian tube.1.Antibody was diluted at 1:200(4°C overnight). 2.High-pressure and temperature EDTA, pH8.0 was used for antigen retrieval. 3.Secondary antibody was diluted at 1:200(room temperature, 30min).



Immunohistochemical analysis of paraffin-embedded Human Fallopian tube.1.Antibody was diluted at 1:400(4°C overnight). 2.High-pressure and temperature EDTA, pH8.0 was used for antigen retrieval. 3.Secondary antibody was diluted at 1:200(room temperature, 30min).



Immunohistochemical analysis of paraffin-embedded Human Fallopian tube.1.Antibody was diluted at 1:400(4°C overnight). 2.High-pressure and temperature EDTA, pH8.0 was used for antigen retrieval. 3.Secondary antibody was diluted at 1:200(room temperature, 30min).



Immunohistochemical analysis of paraffin-embedded Human Fallopian tube.1.Antibody was diluted at 1:400(4°C overnight). 2.High-pressure and temperature EDTA, pH8.0 was used for antigen retrieval. 3.Secondary antibody was diluted at 1:200(room temperature, 30min).

Storage

-20°C for one year

501 Changsheng S Rd, Nanhu Dist, Jiaxing, Zhejiang, China

Tel: 86 21 31007137 | E-mail: save@bt-laboratory.com | www.bt-laboratory.com