

c-Src Monoclonal Antibody

Description

Product type	Primary Antibody
Code	BT-MCA0012
Host	Mouse
Isotype	IgG
Size	50ul, 100ul
Immunogen	Purified recombinant fragment of c-Src (aa10-193) expressed in E. Coli.
Mol wt	N/A
Species reactivity	Human,Mouse,Rat
Clonality	Monoclonal
Recommended application	WB, ELISA
Concentration	1 mg/ml
Full name	Proto-oncogene tyrosine-protein kinase Src
Synonyms	SRC; SRC1; Proto-oncogene tyrosine-protein kinase Src; Proto-oncogene c-Src; pp60c-src; p60-Src

This product is for research use only, not for use in human, therapeutic or diagnostic procedure.

Background

This gene is highly similar to the v-src gene of Rous sarcoma virus. This proto-oncogene may play a role in the regulation of embryonic development and cell growth. The protein encoded by this gene is a tyrosine-protein kinase whose activity can be inhibited by phosphorylation by c-SRC kinase. Mutations in this gene could be involved in the malignant progression of colon cancer. Two transcript variants encoding the same protein have been found for this gene.

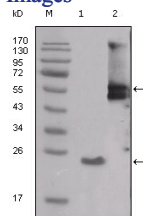
Recommended Dilution

ELISA: 1:10000

WB: 1:500 - 1:2000

Not yet tested in other applications.

Images



Western Blot analysis using c-Src Monoclonal antibody against truncated SRC-His recombinant protein (1) and PMA treated THP-1 cell lysate (2).

Storage

-20°C for one year