

Caspase 9 Monoclonal Antibody(3-20)

Description

Product type	Primary Antibody
Code	BT-MCA0014
Host	Mouse
Isotype	IgG
Size	20ul, 50ul, 100ul
Immunogen	Synthetic Peptide of Caspase 9
Mol wt	46281
Species reactivity	Human,Mouse,Rat,chicken
Clonality	Monoclonal
Recommended application	WB, IHC-p, IF, ICC, IP
Concentration	1 mg/ml
Full name	Caspase-9
Synonyms	CASP9; MCH6; Caspase-9; CASP-9; Apoptotic protease Mch-6; Apoptotic protease-activating factor 3; APAF-3; ICE-like apoptotic protease 6; ICE-LAP6

This product is for research use only, not for use in human, therapeutic or diagnostic procedure.

Background

This gene encodes a member of the cysteine-aspartic acid protease (caspase) family. Sequential activation of caspases plays a central role in the execution-phase of cell apoptosis. Caspases exist as inactive proenzymes which undergo proteolytic processing at conserved aspartic residues to produce two subunits, large and small, that dimerize to form the active enzyme. This protein can undergo autoproteolytic processing and activation by the apoptosome, a protein complex of cytochrome c and the apoptotic peptidase activating factor 1| this step is thought to be one of the earliest in the caspase activation cascade. This protein is thought to play a central role in apoptosis and to be a tumor suppressor. Alternative splicing results in multiple transcript variants.

Recommended Dilution

IF: 1:200

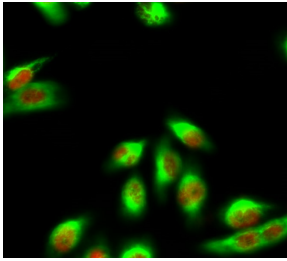
IHC: 1:50-300

IP: 1:200

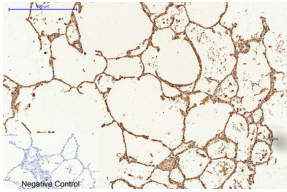
WB: 1:1000-5000

Not yet tested in other applications.

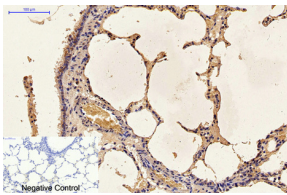
Images



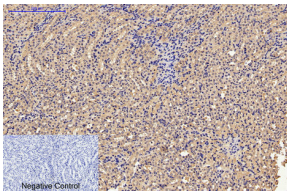
Immunofluorescence analysis of HeLa cell. eIF2Alpha Polyclonal Antibody(red) was diluted at 1:200(4°C overnight). Caspase 9 Monoclonal antibody(3-20)(green) was diluted at 1:200(4°C overnight).



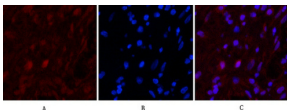
Immunohistochemical analysis of paraffin-embedded Human-lung tissue. 1.Caspase 9 Monoclonal antibody(3-20) was diluted at 1:200(4°C,overnight). 2.Sodium citrate pH 6.0 was used for antibody retrieval(>98°C,20min). 3.Secondary antibody was diluted at 1:200(room temperature, 30min). Negative control was used by secondary antibody only.



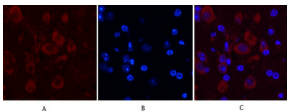
Immunohistochemical analysis of paraffin-embedded Rat-lung tissue. 1.Caspase 9 Monoclonal antibody(3-20) was diluted at 1:200(4°C,overnight). 2.Sodium citrate pH 6.0 was used for antibody retrieval(>98°C,20min). 3.Secondary antibody was diluted at 1:200(room temperature, 30min). Negative control was used by secondary antibody only.



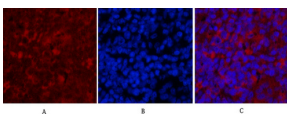
Immunohistochemical analysis of paraffin-embedded Mouse-kidney tissue. 1.Caspase 9 Monoclonal antibody(3-20) was diluted at 1:200(4°C,overnight). 2.Sodium citrate pH 6.0 was used for antibody retrieval(>98°C,20min). 3.Secondary antibody was diluted at 1:200(room temperature, 30min). Negative control was used by secondary antibody only.



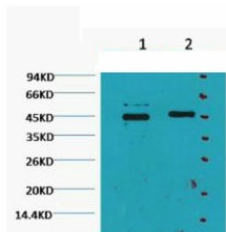
Immunofluorescence analysis of Human-appendix tissue. 1.Caspase 9 Monoclonal antibody(3-20) (red) was diluted at 1:200(4°C,overnight). 2. Cy3 labeled Secondary antibody was diluted at 1:300(room temperature, 50min).3. Picture B: DAPI(blue) 10min. Picture A:Target. Picture B: DAPI. Picture C: merge of A+B



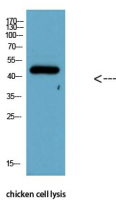
Immunofluorescence analysis of Mouse-brain tissue. 1.Caspase 9 Monoclonal antibody(3-20)(red) was diluted at 1:200(4°C,overnight). 2. Cy3 labeled Secondary antibody was diluted at 1:300(room temperature, 50min).3. Picture B: DAPI(blue) 10min. Picture A:Target. Picture B: DAPI. Picture C: merge of A+B



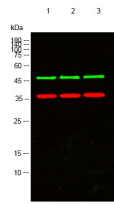
Immunofluorescence analysis of Rat-spleen tissue. 1.Caspase 9 Monoclonal antibody(3-20)(red) was diluted at 1:200(4°C,overnight). 2. Cy3 labeled Secondary antibody was diluted at 1:300(room temperature, 50min).3. Picture B: DAPI(blue) 10min. Picture A:Target. Picture B: DAPI. Picture C: merge of A+B



Western blot analysis of HeLa diluted at 1) 1:2000 2) 1:5000



Western Blot analysis of chicken cell lysis using Antibody diluted at 1:1000.



Western blot analysis of lysates from 1) HeLa, 2) Jurkat, 3) 3T3 cells, (Green) primary antibody was diluted at 1:1000, 4° overnight, secondary antibody was diluted at 1:10000, 37°C 1 hour. (Red) GAPDH Polyclonal Antibody antibody was diluted at 1:5000 as loading control, 4°C overnight, secondary antibody was diluted at 1:10000, 37°C 1 hour.

Storage

-20°C for one year

501 Changsheng S Rd, Nanhu Dist, Jiaxing, Zhejiang, China

Tel: 86 21 31007137 | E-mail: save@bt-laboratory.com | www.bt-laboratory.com