

CDX2 Monoclonal Antibody(14H6)

Description

Product type	Primary Antibody
Code	BT-MCA0019
Host	Mouse
Isotype	IgG
Size	20ul, 50ul, 100ul
Immunogen	Synthetic Peptide of CDX2
Mol wt	33510
Species reactivity	Human,Mouse,Rat
Clonality	Monoclonal
Recommended application	WB, IF, ICC, IHC-p
Concentration	1 mg/ml
Full name	Homeobox protein CDX-2
Synonyms	CDX2; CDX3; Homeobox protein CDX-2; CDX-3; Caudal-type homeobox protein 2

This product is for research use only, not for use in human, therapeutic or diagnostic procedure.

Background

This gene is a member of the caudal-related homeobox transcription factor gene family. The encoded protein is a major regulator of intestine-specific genes involved in cell growth and differentiation. This protein also plays a role in early embryonic development of the intestinal tract. Aberrant expression of this gene is associated with intestinal inflammation and tumorigenesis.

Recommended Dilution

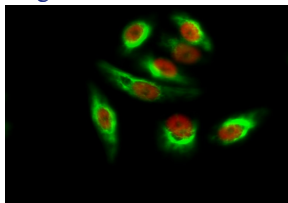
IF: 1:200

IHC: 1:200

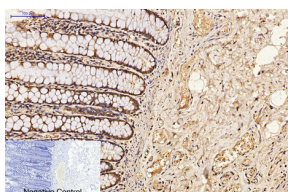
WB: 1:1000

Not yet tested in other applications.

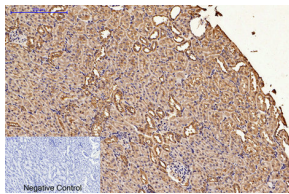
Images



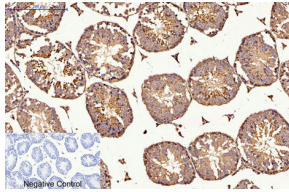
Immunofluorescence analysis of HeLa cell. Amyloid-Beta Polyclonal Antibody(green) was diluted at 1:200(4°C overnight). (red) was diluted at 1:200(4°C overnight).



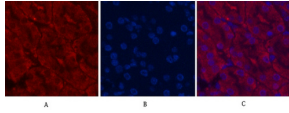
Immunohistochemical analysis of paraffin-embedded Human-colon tissue. 1.CDX2 Monoclonal antibody(14H6) was diluted at 1:200(4°C,overnight). 2.Sodium citrate pH 6.0 was used for antibody retrieval(>98°C,20min). 3.Secondary antibody was diluted at 1:200(room temperature, 30min). Negative control was used by secondary antibody only.



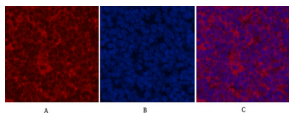
Immunohistochemical analysis of paraffin-embedded Rat-kidney tissue. 1.CDX2 Monoclonal antibody(14H6) was diluted at 1:200(4°C,overnight). 2.Sodium citrate pH 6.0 was used for antibody retrieval(>98°C,20min). 3.Secondary antibody was diluted at 1:200(room temperature, 30min). Negative control was used by secondary antibody only.



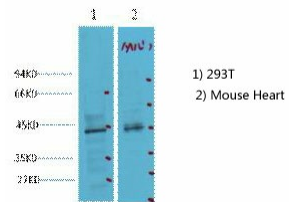
Immunohistochemical analysis of paraffin-embedded Mouse-testis tissue. 1.CDX2 Monoclonal antibody(14H6) was diluted at 1:200(4°C,overnight). 2.Sodium citrate pH 6.0 was used for antibody retrieval(>98°C,20min). 3.Secondary antibody was diluted at 1:200(room temperature, 30min). Negative control was used by secondary antibody only.



Immunofluorescence analysis of Mouse-kidney tissue. 1.CDX2 Monoclonal antibody(14H6)(red) was diluted at 1:200(4°C,overnight). 2. Cy3 labled Secondary antibody was diluted at 1:300(room temperature, 50min).3. Picture B: DAPI(blue) 10min. Picture A:Target. Picture B: DAPI. Picture C: merge of A+B



Immunofluorescence analysis of Rat-spleen tissue. 1.CDX2 Monoclonal antibody(14H6)(red) was diluted at 1:200(4°C,overnight). 2. Cy3 labled Secondary antibody was diluted at 1:300(room temperature, 50min).3. Picture B: DAPI(blue) 10min. Picture A:Target. Picture B: DAPI. Picture C: merge of A+B



Western blot analysis of 1) 293T, 2) Mouse Heart tissue diluted at 1:2000.

Storage

-20°C for one year

501 Changsheng S Rd, Nanhu Dist, Jiaxing, Zhejiang, China

Tel: 86 21 31007137 | E-mail: save@bt-laboratory.com | www.bt-laboratory.com