

CK17 Monoclonal Antibody(10A1)

Description

| | |
|--------------------------------|--|
| Product type | Primary Antibody |
| Code | BT-MCA0021 |
| Host | Mouse |
| Isotype | IgG |
| Size | 20ul, 50ul, 100ul |
| Immunogen | Synthetic Peptide of CK17 |
| Mol wt | 48106 |
| Species reactivity | Human |
| Clonality | Monoclonal |
| Recommended application | WB, IHC-p, IF, ICC, IP |
| Concentration | 1 mg/ml |
| Full name | Keratin type I cytoskeletal 17 |
| Synonyms | KRT17; Keratin; type I cytoskeletal 17; 39.1; Cytokeratin-17; CK-17; Keratin-17; K17 |

This product is for research use only, not for use in human, therapeutic or diagnostic procedure.

Background

Mutations in this gene lead to Jackson-Lawler type pachyonychia congenita and steatocystoma multiplex.

Recommended Dilution

IF: 1:200

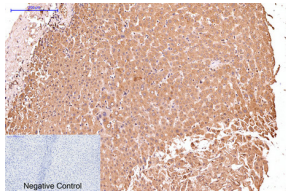
IHC: 1:50-300

IP: 1:200

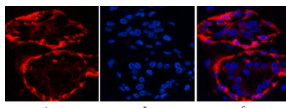
WB: 1:1000

Not yet tested in other applications.

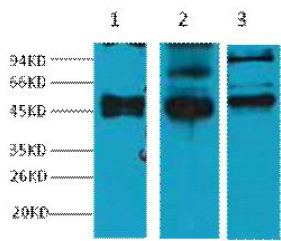
Images



Immunohistochemical analysis of paraffin-embedded Human-liver tissue. 1.CK17 Monoclonal antibody(10A1) was diluted at 1:200(4°C,overnight). 2.Sodium citrate pH 6.0 was used for antibody retrieval(>98°C,20min). 3.Secondary antibody was diluted at 1:200(room temperature, 30min). Negative control was used by secondary antibody only.



Immunofluorescence analysis of Human-breast tissue. 1.CK17 Monoclonal antibody(10A1)(red) was diluted at 1:200(4°C,overnight). 2. Cy3 labeled Secondary antibody was diluted at 1:300(room temperature, 50min).3. Picture B: DAPI(blue) 10min. Picture A:Target. Picture B: DAPI. Picture C: merge of A+B



Western blot analysis of 1) HeLa, 2) MCF7, 3) 293T diluted at 1:2000.

Storage

-20°C for one year

501 Changsheng S Rd, Nanhu Dist, Jiaxing, Zhejiang, China

Tel: 86 21 31007137 | E-mail: save@bt-laboratory.com | www.bt-laboratory.com